

s
t
santtomàs

Gent molt capaç!

Report 2024

santtomàs.cat

GREETINGS FROM THE PRESIDENT

You are holding the 2024 annual report of the Sant Tomàs Social Group. Inside, you will find key figures, the most important events and the most relevant milestones achieved throughout the year. For us, it is always a good moment to look back and reflect, and we can confidently say that 2024 has been a very positive year.

We opened a new residential home in Sant Pere de Torelló, celebrated the 25th anniversary of Riudeperes, won the award for the best Easter chocolate figure in Catalonia, and even reached the summit of Matagalls with adapted chairs for students of the Estel School. However, one of the things we are most proud of is the incorporation of a new member to the Sant Tomàs Board and Board of Trustees—someone who receives support from our organisation. Ignasi Julià has been involved for years in the training and job placement service, the leisure and sports service, and the independent living support service. His election at the latest assembly clearly shows that we are moving in the right direction. Including his voice and perspective makes us stronger and more complete. I want to express my heartfelt thanks to everyone who made possible the amendment of the Sant Tomàs Statutes an essential step that allows our organisation to be more inclusive, closer to the people we serve, and more coherent with our values.

Still, we know there is a long road ahead. That's why, on December 3rd, International Day of Persons with Disabilities, we took to the streets without hesitation. We rallied to demand that the Government of Catalonia implement fair, necessary, and, I would say, urgent improvements for professionals working in the disability support




sector. Their salaries do not reflect the demands of their work, nor are they aligned with those of professionals in other sectors. As a result, organisations like ours are suffering the consequences of underfunding. Despite their extraordinary professionalism and clear sense of vocation, many of our staff are forced to leave for better-paid jobs. Every departure is deeply felt. We lose not just a team member, but an essential part of Sant Tomàs, and more importantly, the people we support are directly affected. High staff turnover disrupts the continuity of care and weakens the bonds of trust, which are vital in our work.


We sincerely hope that 2025 will be the year of salary equality, improved working conditions, and long-overdue recognition for all the professionals who dedicate their talent, energy, and expertise to the disability sector. Thank you all for your continued support.

Greetings
Joan Casany i Viñeta, President



BOARD AND BOARD OF TRUSTEES

-  Sant Tomàs Association
-  Sant Tomàs Foundation
-  Tac Osona Foundation

Mr. Joan Casany i Viñeta   

President (CEDO - Osona Business Council)

Ms. M.Carme Bover i Franquesa   

1st Vice-President (Riudeperes Centre)

Mr. Marc Verdaguer i Montanyà   

2nd Vice-President (Calldetenes Town Council)

Ms. Àngels Vila i Sala   

Secretary (Vic Bar Association)

Mr. Marc Mussons i Torras   

Treasurer (University of Vic - Central University of Catalonia)

Mr. Joan Moreno i Parés  

Member (CDIAP Tris Tras and CDI Espai Viu)

Mr. Xavier Hernández i Soto  

Member (Estel Special Education School)

Mr. Joan Codinachs i Alonso  

Member (Sant Tomàs Occupational Centre)

Mr. Ramon Casasas i Riba  

Member (Clarella housing service)

Ms. Dolors Ramon i Rovira  

Member (Club CAR leisure and sports service and Respite Service)

Mr. Ignasi Julià i Lloret  

Member (Eina training and employment centre)

Ms. Carme Guinovart i Garriga   

Member (Tac Osona Special Work Centre)

Ms. Marta Moreta i Rovira  

Member (Manlleu Municipal Council)

Ms. Núria Montanyà i Tanyà  

Member (Torelló Municipal Council)

Ms. Núria Homs i Molist  

Member (Vic City Council)

Ms. Sara Vidal i Aguiló  

Member (La Fageda)

Ms. Mercè Generó i Prat  

Member (Osonament)

Mr. Antoni Molas i Casas  

Member (Hospital Consortium of Vic)

Mr. Gerard Sancho i Vilalta  

Member (Osona Regional Council)

Mr. Pere Girbau i Pous 

Member (Civil Society)

Mr. Evarist Puigvila i Prat 

Member (Calandra)

Mr. Josep Ramon Delgado i Berdala 

Member (Calandra)

Ms. Maria Carme Barcons i Matavera 

Member (Calandra)



MISSION

Improve the quality of life of people with intellectual disabilities or developmental difficulties, and that of their families.



VISION

Be a person-centred organisation that works in collaboration with society and through networks to provide high-quality support that promotes individual empowerment and sustainable development, based on the principles and tools of the social and solidarity economy. Geographical scope: Osona and Lluçanès.



VALUES

Sant Tomàs is defined by its commitment to always placing the person at the centre, as a way to uphold and value their dignity. Respect for human dignity is the foundation upon which all our guiding values and decisions are built.

- Commitment
- Equity
- Integrity
- Responsibility
- Sustainability
- Transparency and communication

SANT TOMÀS

SOCIAL AND EDUCATIONAL AREA

Sant Tomàs Association: Founded in 1967 by a group of seven families with children with disabilities, together with members of civil society and representatives from local councils in the Osona region. Its purpose is to promote leisure activities and community involvement. It organises recreational, participatory, and social activities, as well as cross-cutting initiatives that strengthen the bonds between families.

Sant Tomàs Foundation: Established in 2016 by the Sant Tomàs Association, the Foundation integrates educational and care services aimed at supporting people with intellectual disabilities or developmental difficulties and their families. It provides care and support throughout every stage of life.

ORGANIZATIONS WE ARE PART OF

*Catalan Supported Employment Association (ACTAS) *Coordinator of Centres for people with learning disabilities in Catalonia (CCPC) *Catalan Sports Federation for people with learning disabilities (ACE) *Special Education Research Group (GIEE) *"La Caixa" Incorpora Programme *Osona Childhood, Adolescence and Families Committee *Catalan Union of Early Care Centres (UCCAP) *XEISOR (Network of Social-Employment Integration Institutions from Osona to the Ripollès) *Vic Sustainable Schools Network *Housing Agency of Catalonia Social Integration *Manlleu Network of Social Solidarity Economy Initiatives.

ORGANISATION WE PARTICIPATE IN

***L'ESGUARD GUARDIANSHIP FOUNDATION:** Sant Tomàs is a founding member and holds a seat on its Board of Trustees.

***SINERGRUP (ASSOCIATION OF SOCIAL SYNERGY ORGANISATIONS):** A network of eight non-profit organisations working to support vulnerable groups. The General Director of Sant Tomàs served as its President from 2014 to 2024.

***OSONAMENT:** Sant Tomàs is a founding member and has been actively involved since the beginning.

***DINCAT AND AEE DINCAT:** Sant Tomàs is a board member and actively participates in several working committees of Dincat. It is also a board member of the Social Economy Association.

***VITAMINA D:** Sant Tomàs is part of this energy services cooperative, which promotes a more sustainable energy model.

SOCIAL ENTERPRISE AREA

Tac Osona Foundation: Created in 2009, it generates stable employment opportunities to promote the professional and social inclusion of people with intellectual disabilities, developmental difficulties, or those in vulnerable situations. It includes the following subsidiaries and affiliated companies:

* TAC OSONA EMPRESA D'INSERCIÓ, SLU:

Established in 2020, fully owned by the Tac Osona Foundation and launched with the support of Manlleu City Council. It focuses on the social and professional inclusion of people facing barriers to employment, primarily in the cleaning and maintenance sectors. It currently employs 49 people at risk of social exclusion.

* **VIC VERD, SL:** Established in 2011 in partnership with Vic City Council and Recollida i Reciclatge. Following the withdrawal of Vic City Council, Tac Osona Foundation now holds 91.4% of the shares, and Recollida i Reciclatge SL holds the remaining 8.6%. The company manages municipal gardening and bulky waste collection in Vic, employing 30 people, 22 of whom have disabilities.

* **TAC OSONA SERVEIS, SLU:** Established in 2021 and fully owned by the Tac Osona Foundation, this subsidiary represents an organisational improvement and complements the activities of the Special Work Centre (CET). Services are provided by professionals from various CET sectors as well as leisure monitors at Estel School and other locations.

* **ECOGRUP ECOLÒGICA, SL:** Founded in 2012, 75% of its capital is shared equally between the Tac Osona Foundation and the Viver de Bell-lloc Foundation, with the remaining 25% held by private partners in the organic fruit and vegetable sector. The company sells organic produce online and employs 6 people with intellectual disabilities.

* **RECOLLIDA I RECICLATGE, SL:** Created in 1994, Tac Osona Foundation holds a 36% stake. This company specialises in the collection of bulky waste and recycling of plastic, cardboard, and pallets. It employs 24 people, including 4 with disabilities.

* **UTE MAP-TAC:** Launched in 2016, it is 75% owned by the MAP Foundation and 25% by the Tac Osona Foundation. It provides gardening services in the municipality of Torelló.

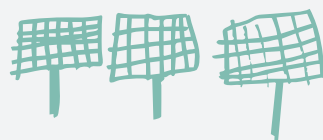
COMMITMENT TO SUSTAINABILITY



Sant Tomàs is committed to electric mobility. Currently, 10% of the organisation's vehicle fleet is fully electric.

The organisation operates 11 charging stations, which enables the charging of 21,000 kWh in 2024, equivalent to the CO₂ absorption capacity of 2,858 trees.

Over the past two years, Sant Tomàs has completed 5 solar installations with a total installed capacity of 447.5 kWp, investing €328,000 in 6 photovoltaic projects, €20,190 in charging stations and €81,900 in electric vehicles.



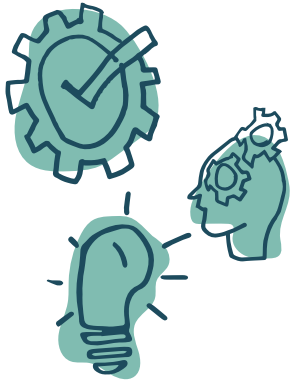
In the last four years, propane consumption has decreased by 31%, thanks to an increased use of biomass energy.

In 2024, 18% of the organisation's energy needs were met through its own self-consumption solar photovoltaic systems.



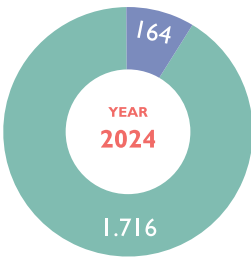
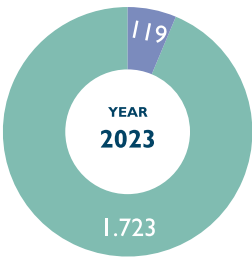
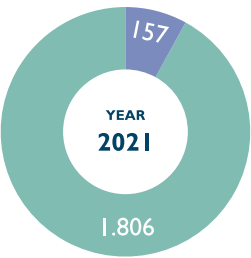
CURRENT AND FUTURE PROJECTS

- Addressing the growing needs and waiting lists in our region, particularly at Escola Estel.
- Opening a new Occupational Center in Torelló and a new residential home within the Occupational center building in Sant Hipòlit de Voltregà.
- Expanding projects focused on premature aging of the people we support.
- Continuing to advocate for fair and equal working conditions for professionals in the disability sector.
- Monitoring the start of the renovation works at Riudeperes.
- Renovating the future Sant Tomàs Training Center building in Vic.
- Preparing the new place for the upcoming Occupational Center in Manlleu.
- Implementing the Healthy Organisation Plan to improve employee wellbeing.
- Promoting a more sustainable and efficient waste management model.
- Following up on the restoration works at the Monastery.



COMMUNITY

Members ● Volunteers ●



MEDIA IMPACTS

197 MEDIA APPEARANCES



84

Press



18

Television



14

Radio



88

Digital Media

WEBSITE AND SOCIAL MEDIA

28.229 WEBSITE VISITS



4.718
Facebook
followers



2.099
X
followers

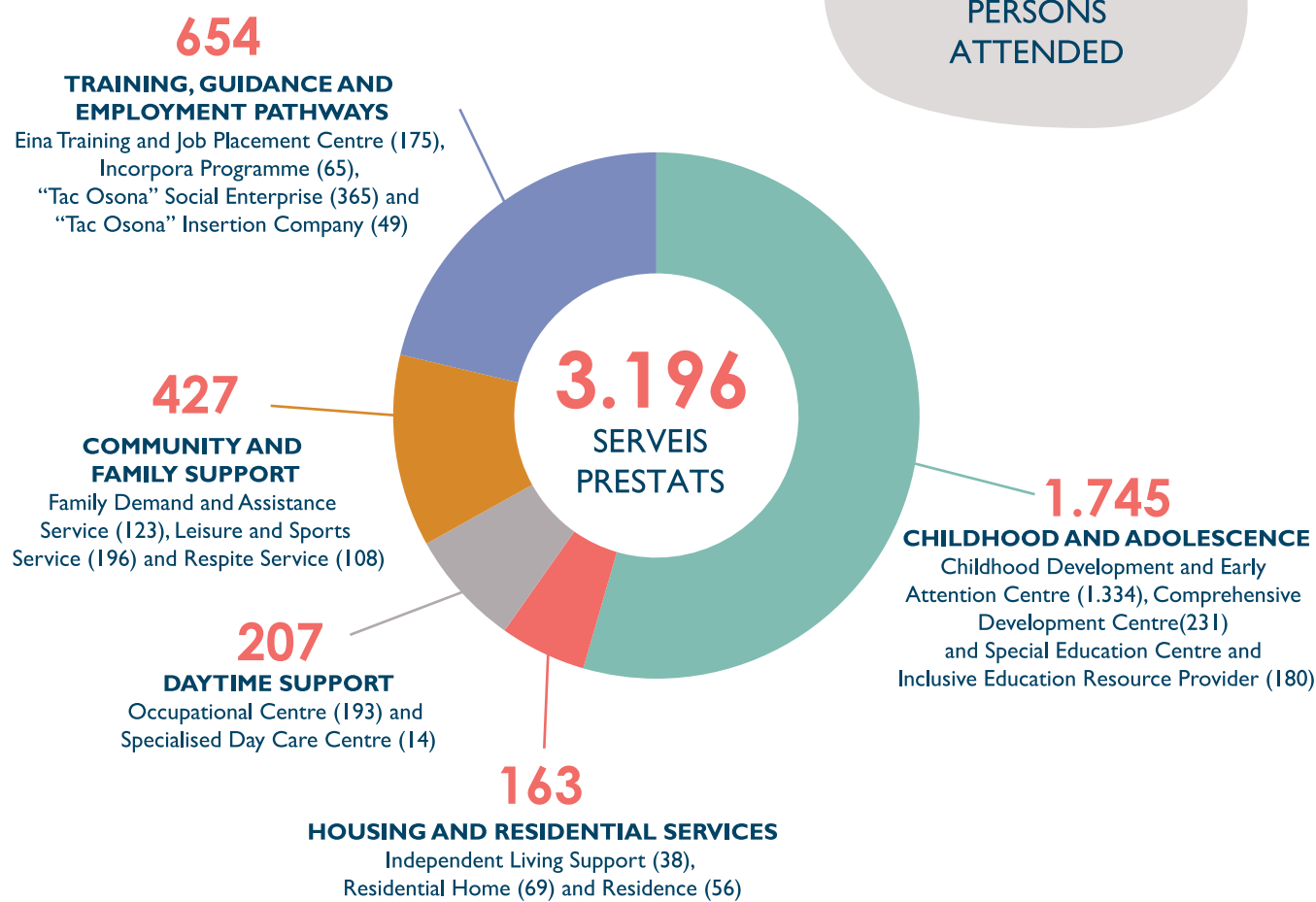


3.953
Instagram
followers



1.574
LinkedIn
followers

PERSONS ATTENDED



HISTORICAL



SERVICES OF SANT TOMÀS

CHILDHOOD AND ADOLESCENCE

We support children and young people with special needs through therapies, stimulation activities and by fostering personalised learning. Our work is coordinated with schools and community stakeholders to ensure comprehensive care.



1.745
SERVICES
PROVIDED

Childhood Development and Early Attention Centre

A specialist centre for the early detection and care of children aged 0 to 6 with developmental challenges, with a particular focus on children aged 0 to 3 with severe difficulties. Part of the public social services network, the centre provides free care with the involvement of families and their immediate environment.

 **1334**

Comprehensive Development Centre

A private service for children and youth aged 6 to 18 who require support in motor, cognitive, educational, communication or emotional areas.

 **231**

Special Education School and Inclusive Education Resource Provider

A publicly funded special education school that offers personalised support for children and youth aged 3 to 21, promoting their learning and inclusion. The school also acts as a resource centre for inclusive education.

 **180**

DAYTIME SUPPORT

We offer services to adults with intellectual disabilities that enhance their wellbeing and autonomy. Through tailored programmes, we promote personal growth, social inclusion and active participation in community life.



207
SERVICES
PROVIDED

Ocupacional Centre

An alternative to employment for adults with intellectual disabilities. It fosters personal development, social awareness, and integration by creating a meaningful space where people feel valued and connected to their community.

 **193**

Specialised Day Care Centre

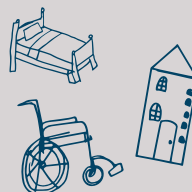
Provides day care for individuals with intellectual disabilities who require extensive, generalised support and have additional health needs. As part of the regional care network, it focuses on autonomy and wellbeing through person-centred care.

 **14**

SERVICES OF SANT TOMÀS

HOUSING AND RESIDENTIAL SERVICES

We provide safe and adapted living spaces for people with intellectual disabilities, supported by a professional team that delivers personalised care. Our aim is to promote autonomy, inclusion and community engagement.



163
SERVICES
PROVIDED

Independent Living Support

This service is designed for individuals with intellectual disabilities who are able to live independently or in their own homes with occasional support in areas where assistance or supervision is needed.



38

Residential Home

These permanent residential homes cater to individuals who also use the organisation's day or work-related services. The model promotes autonomy and wellbeing, respecting each person's rights, preferences, and active participation in daily life.



69

Residence

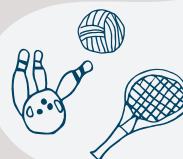
A residential service for individuals with intellectual disabilities who require ongoing support and may have additional health conditions. It provides either permanent or temporary accommodation and offers comprehensive support with daily activities, 24/7, all year round.



56

COMMUNITY AND FAMILY SUPPORT

We offer support for families and community services to promote inclusion and wellbeing for people with intellectual disabilities. Through guidance, personalised care, and adapted activities, we encourage autonomy and social participation.



427
SERVICES
PROVIDED

Family Demand and Assistance Service

This service responds to the needs of adults with disabilities and their families. It coordinates cross-cutting initiatives to promote family involvement and offers individualised support, peer support groups, and collaborative spaces. It also organises talks and informational sessions to guide and support families



123

Leisure and Sports Club

We provide accessible leisure and sports activities in community settings for people with intellectual disabilities. These initiatives promote physical and mental wellbeing, personal growth, and community integration.



196

Respite Service

This service offers families temporary relief from caregiving responsibilities. It includes both in-home and external support options, covering short-term accommodation or occasional assistance with daily care.



108

SERVICES OF SANT TOMÀS

TRAINING, GUIDANCE AND EMPLOYMENT PATHWAYS

We support people with disabilities throughout their training and employment journey. Through guidance programmes, skills development and employment support, we facilitate labour market inclusion and promote autonomy and quality of life.

Training and Job Placement Centre

Provides tailored training programmes to enhance professional skills and meet labour market needs. It also supports job placement for individuals with intellectual disabilities and/or developmental disorders, offering ongoing support to both the individual and the employer to ensure integration and job stability. Currently, **120** work in mainstream companies with supports, and **61** are following training and orientation programmes.



“Incorpora” Program

Through the “la Caixa” Foundation’s Incorpora Programme, **65** people at risk of social exclusion received training and employment support.

“Tac Osona” Social Enterprise

A social enterprise where most employees are people with intellectual disabilities — 75% of them facing significant challenges. With the support of daily supervisors and psychological and social guidance, the centre promotes job integration and personal development. Tac Osona offers a wide range of services for companies, public institutions, and individuals.



“Tac Osona” Insertion Company

A social enterprise providing employment opportunities for people in vulnerable situations. Through technical support and socio-occupational guidance, individuals gain work experience and training that prepare them for integration into the mainstream labour market. The aim is to foster inclusion through personalised support pathways.



654
SERVICES
PROVIDED



With the support of:



OUR TEAM

1.012
WORKERS*



598

**WORKERS WITHOUT
DISABILITIES**



365

**WORKERS WITH
DISABILITIES**



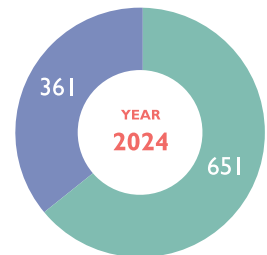
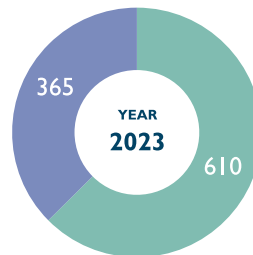
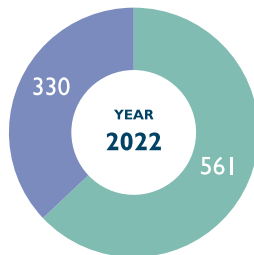
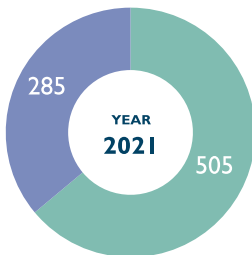
49

**WORKERS AT RISK OF
SOCIAL EXCLUSION**

*Aggregated data from the Sant Tomàs Association, Sant Tomàs Foundation, Tac Osona Foundation, Tac Osona Insertion Company, Tac Osona Services and Vic Verd.

Female workers ●

Male workers ●



81%

**STAFF WITH A PERMANENT
CONTRACT**



511

WORKERS TRAINED



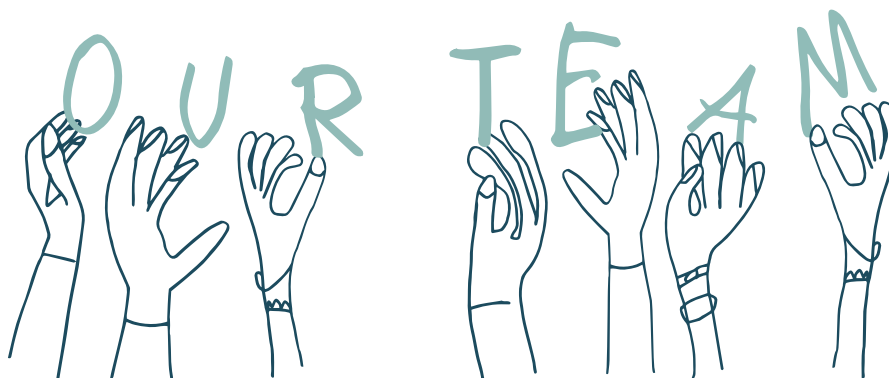
190

TRAINING

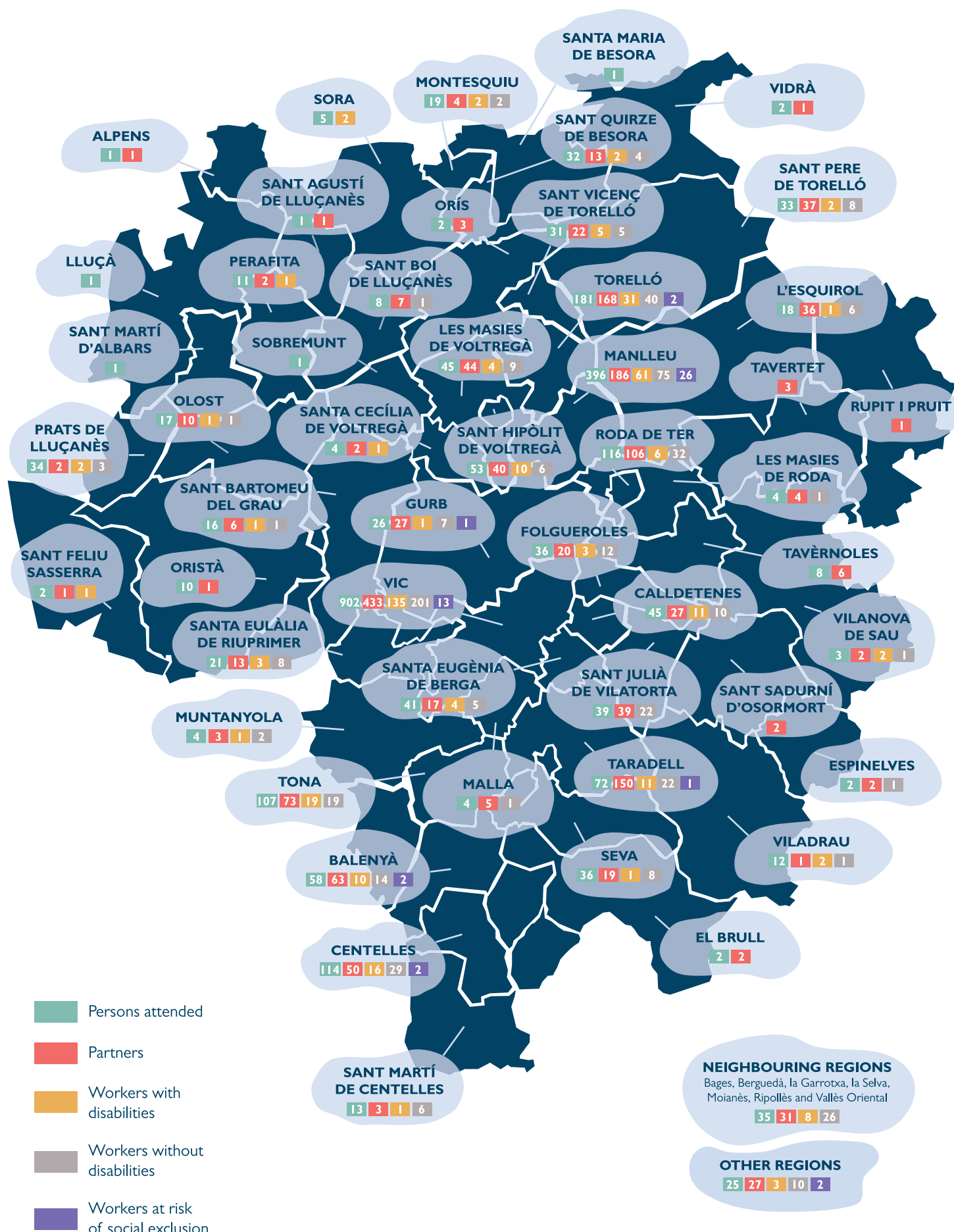


1.484,3

**HOURS OF
TRAINING**



THE IMPACT OF SANT TOMÀS IN THE REGION



THE HIGHLIGHTS OF THE YEAR



Sant Tomàs opens a new residential home in Sant Pere de Torelló



Sant Tomàs warns of the risks of screen exposure in children aged 0 to 3



Sant Tomàs creates an energy services cooperative



L'Obrador de Sant Tomàs wins the prize for best Easter chocolate figure in Catalonia



88% of Sant Tomàs families report being satisfied or very satisfied with the support received



Five adapted chairs built with Estel students and over 100 people reach the summit of Matagalls



Sant Tomàs hosts the presentation of the publication Mental Health and Disability in Osona



For the first time, a person supported by Sant Tomàs is elected as a member of the Board



Sant Tomàs and "El 9NOU", a local media, launch a video podcast to raise awareness about abilities.



The Minister of Social Rights visits Sant Tomàs and announces the start of Riudeperes renovation works.



Our residence celebrates its 25th anniversary with a community lunch.



Sant Tomàs urges the government to improve support for the disability sector.

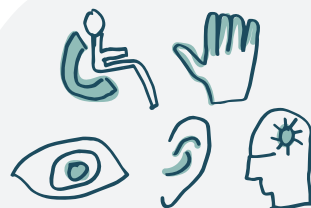
SANT TOMÀS COMMITTEES



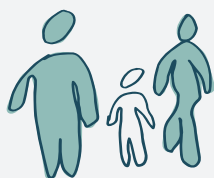
SELF-ADVOCATS



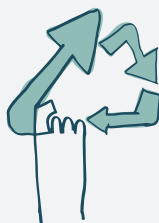
RELATIONSHIPS
AND SEXUALITY



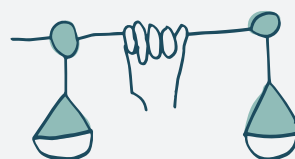
ACCESSIBILITY



ATTENTION TO
FAMILIES



SUSTAINABILITY



EQUALITY



SPACE FOR REFLECTION ON ETHICS
IN SOCIAL INTERVENTION SERVICES
(ERESS)

QUALITY AND EXCELLENCE

Sant Tomàs's quality management system complies with the following international standards: ISO9001:2015 (Quality), ISO14001:2015 (Environment), ISO 45001:2018 (Health and Safety), ISO 22000:2025 (Food Safety). This year, L'Obrador de Sant Tomàs was integrated into the quality system, and all existing certifications have been renewed. Other key projects are the development of the Corporate Responsibility Plan, aligned with the Sustainable Development Goals (SDGs). All strategic actions in the 2024–2026 Strategic Plan are aligned with the organisation's seven priority SDGs. A monitoring tool for the Strategic Plan has been published on the website. Work has also been done to implement a Balanced Scorecard (BSC). All centres have been integrated into the Computer-Assisted Maintenance Management System (GMAO), allowing for efficient management of corrective and preventive maintenance of facilities, equipment and tools. During the year, we began implementing a document management software system to streamline and standardize the handling of employee records in compliance with data protection regulations.



OUR ACTIVITIES



TRAINING AND SUPPORT
FOR JOB PLACEMENT



MUNICIPAL
SERVICES



GARDERING



INDUSTRIAL LAUNDRY



KITCHEN SERVICES



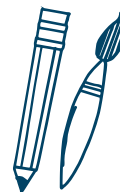
CLEANING



INDUSTRIAL
SERVICES



WORKFORCE
MANAGEMENT SOFTWARE



WWW.AUTENTIC.CAT
GRAPHIC DESIGN SERVICE



CHRISTMAS GIFTS
FOR COMPANIES



SANT TOMÀS
CHIPS



SANT TOMÀS
CHOCOLATE



SANT TOMÀS
WORKSHOP STORE



SANT TOMÀS
CAFETERIA

PARTNER COMPANIES AND INSTITUTIONS

1.163 CLIENT
COMPANIES AND
INSTITUTIONS

COMPANIES THAT HAVE HIRED US IN 2024

*Adecor *Abacus *Aj. de Centelles *Aj. de Sant Bartomeu del Grau *Aj. de Sant Pere de Torelló *Aj. de Vic *Albet *Aldi *Ametller Origen *Array *Baucells *Bekaert Textiles *Benito Urban *Bon Preu *Cadersem *Càrniques Osona *Carrefour *Cata *Cetrikó *Companyia d'Uniformes *Consultori Bayés *Covit *Creu Roja *Divasa Farmavic *E3A Technologies *Elausa electronics *Embotits Cunill *Embotits Espina *Embotits Monells *Embotits Salgot *Esteve Fred *Evofeed *Flosty Standard Republic *Font Verges *Formatges Mas el Garet *Frigorífics Ferrer *Fruites Germans Jimenez *Frusano *Fund. Atlàntida *Fund. Escoles de Taradell *Fund. Hospital de la Santa Creu Vic *Gràfiques Manlleu *Granja Armengol *Granja Caracac *Grup Pulit *IVS Iberica *Integracions Agrocatunya *La Doma *La Farga Grup *Laurtin *Leroy *Les Josefines *Lidl *Liquats Vegetals *LP Foodies *Macson *Madel *Mafriges *Mec. De la fusta. Kim *Metal Graphic *Mimcord *Montronic *Novatilu *Prezero *Proquímia *Quiràlia *Quopiam *Recollida i Reciclatge *Relotgeria Prat *Sala de desfer-magatz. J. Viñas *Seidor *Servycat *Sumar *Supeco *Supermercat suma (el rebost) *Tesem S.A. *UVic-UCC *Vedruna Escorial Vic *Vial net Vic *Vicareu *Zelent Iberica

MAIN CLIENTS

INSTITUTIONS: *Agrupació de Sords de Vic i comarca *Aj. d'Aiguafreda *Aj. de Balenyà *Aj. d'Espinelves *Aj. de El Brull *Aj. de Calldetenes *Aj. de Centelles *Aj. d'Espinelves *Aj. de Folgueroles *Aj. de Gurb *Aj. de la Vall d'en Bas *Aj. de les Masies de Roda *Aj. de les Masies de Voltregà *Aj. de Manlleu *Aj. de Roda de Ter *Aj. de Sant Julià de Vilatorrada *Aj. de Sant Pere de Torelló *Aj. de Sant Quirze de Besora *Aj. de Santa Eulàlia de Riuprimer *Aj. de Santa Eugènia de Berga *Aj. de Seva *Aj. de Taradell *Aj. de Tona *Aj. de Torelló *Aj. de Vic *Aj. de Vilanova de Sau *Ass. Síndrome d'Asperger Osona *Ass. Síndrome d'Asperger Osona *Ass. Sinergrup *Bisbat de Vic *CEO Maresme *CET El Pla *Conferderacion Plena Inclusion España *Consell Comarcal d'Osona *Cop. Teb. i Usuaris Incorpora'm *Espai Natural Guàrdies Savassona *Consell Comarcal d'Osona *Consorci Hospitalari de Vic *Consorci d'Osona de Serveis Socials *Dincat Federació *Diputació de Barcelona *Federación Regnum Christi *Fund. Ampans *Fund. Lluïsa Oller *Fund. Bancària "La Caixa" *Fund. Centre Mèdic Psicopedagògic d'Osona *Fund. Girbau *Fund. Hospital de la Santa Creu *Fund. Impulsa *Fund. Institució Puig-Porret *Fund-Map *Fund. Pere Mata *Fund. Pere Tarrés *Fund. Privada Aspros *Fund. Privada de gestió Clear *Fund. Tutelar l'Esguard Fund. Universitària Balmes *Fund. Viver de Bell-lloc *Generalitat de Catalunya *Institut del Moianès *Llars de l'Amistat Cheshire Fund. Pr. *Mancomunitat la Plana *OAR Vic *Organisme Autònom de Fires i Mercats de Vic *Prodis *UTE MAPTAC

EDUCATIONAL SECTOR: *AFA SES Gurb *DLleure Gestió d'Extraescolars *Escola Guillem de Montrodon *Escola Dto. Joaquim Salarich *Escola Emili Teixidor *Escola Josep Balta i Elias *FEDAC Pare Coll Vic *Fund. Educació i Art *Fund. Estudis Superiors en Ciències de la Salut *Fund. Privada escola Casals Gràcia *Fund. Pia Autonomia Mare de Deu Gleva *Fund. Universitaria Balmes *Fund. Vedruna Catalunya Educació *Fund. Vedruna Gràcia *Institut de Vic *Llar d'infants el Patufet *Lleure Aliberch *Serveis Territorials de Catalunya *UVic-UCC

COMPANIES: *Administració de finques Julita Novellas *AECOC *AERF *Agencia Nord *Aigües Vic, SA *Alimentària Tarradellas Mas Galí *Amcore Balance *Animua *Aparcament del Passeig de Vic *Aplicacions i muntatges Torelló *Argemí prefabricats *Arka RH 2020 *Array Plàstics *Artifex Infraestructures *Aspy prevenció *A.T.F Fill de J. Cuberta *Ausa Comptable *Avicola i Ramadea Casellas *Avient group *Axilone Metal *Barry Callebaut Iberica *Basset Restaurant *Baulenas Aulet *Benito Urban *Berna Tèxtil *Blancafort 2000 *Boira Comercial Tècnica *Bon Preu *Boris 45 *Bugaderia Neutral *Business TIC Consultoria *Caelles Castellvi Miquel *Cal Peyu *Camp Base *Càmping Glòria *Can Pamplona *Can Serrra Mataró *Can Xarina *Caprabo *Carnovic *Carre Hülsta *Casa Ametller *Casa Tarradellas *Casals Reig *CATVL 97 *Cedinsa conservació *Celler Cooperatiu d'Artes *Certis obres i serveis *Cetrikó *Chocolates Fraim *Chocolatisimo *Cigahotels España *Club Natació Vic ETB *Com. Ene. Renovable Vitamina D *Consultori Bayés *Consultors Aplegats *Costertec *Curogar *D'Ausa Gestió d'Aparcaments *Depuradores d'Osona *Dinacil *Discongell *Distrimakeup *Divasa *Farmavic *Ecogroup Ecològica *Edelweiss Paper *Elis Manomatic *El Taller Estofat *Enprat *Equip Assistència Primària Vic *Erma Plus Hotels *Esbelt *Escorxador Frigorífic Osona *Esperit de Vici *Esporc *Estructures muntatges i soldadures JS *Etalentum *Eukarya Xocolata *Euroclima difusió *Exit 2014 *Ferreteria Comella *Fèrules i Vàlvules *Finques Osona *Fisioteràpia i Salut Kinevic *Fleca Cal Tiana *Forn de Pa Xata *FredVic *Freixa-Bofill Tesem *Fundació Antoni Serra Santamans *Fundiciones de Roda *Geisntal *Girbau *Grapats and Nuts *Grup Ledexport *Grupo Hoteles Playa *Hostal Bofill *Hostal La Glòria les quatre emes *Hosteleria de serveis col·lectius *Illunion Bugaderies de Catalunya *Industrias Tekor *Indyk internacional de comerç de PR *Infocentre *IQAP *Isern Electro *Kamel Dermofarmacia *Kennet Osaruyi *Konecranes and demag ibérica *La Doma S.A de Curtidos *La Farga Lacambra *Laboratoris Neusc *Lasevaweb global web services *Lleure Aliberch *Liquats Vegetals *Llinasport *Lotesconscientes *Mafriges *Manufactura Iberica *Mapex *Martí Albó Baranera *Materials de construcció Gil *Mimcord *Montronic *Movil, SA. *MSS Seidor, SL *Nando Jubany *Naturalea *Nirvauto Vallés *Nordlogway *Nuri i Espadaler *Olecrum 22 *Omnia Equo *Onaigua EPEL *Onnera Laundry Barcelona *Osona Elevació *Panaderia Alqueza *Planificadora Vic *Paradores de Turismo de España *Parés Canudas *Pasquina *Patel *Pedro Roquet *Pibasa serveis *Prats Pa *Prezero España *Proquímia *Pujolasos *QFI Diplomatic Spain *Quadpack impressions *Recollida i Reciclatge *Recuperacions Muntada *Rivasa Intercontinental *Rodi *Rodin *Roquet Hydraulics *Rovira Motor *Sagitari *SC Gestió *Seidor Solutions *Serveis Hotelers Vila Dot *Servycat *Seven Languages *Signia Consultors *Silgan dispensin Systems Covit Europe *Sinelec Nord *Socid. General guas de Barcelona *Softvic *Some *Splendid Foods *Successors d'Orench *Suara Serveis *Sumar *TAC Osona Serveis *Tal Com Pinta *Teb Verd *Tell me Vic *Tesem *TKBNA *Torner Chao Imma *Total Elite Trade *Tres Knitting Fabrics *Triposona *Turris Panem *Turrónes La Colmena *Tushita *Unión promotora de Inversiones *Urbaser *UTE Eix Transversal *UTE Lots Socials Singulares 4 *Vascats *Vidal Pons *Vidal Tulsa Eduard *Voltregà Trading *Xarxa Comercial de Vic *Xarxa de Serveis Urbans *Xemivica Distribució *25 Osona Bus, SA.

FINANCIAL DETAILS

SANT TOMÀS ASSOCIATION

BALANCE SHEET	2023 (thousand €)	2024 (thousand €)
Non-current assets	69	68
Current assets	152	140
TOTAL ASSETS	221	208
Net assets	118	117
Non-current liabilities	15	0
Current liabilities	88	90
NET ASSETS AND LIABILITIES	221	208

PROFIT AND LOSS ACCOUNT	2023 (thousand €)	2024 (thousand €)
Income from activities	221	281
Grants awarded and other expenses	0	0
Variation in stocks	0	0
Supplies	-5	0
Other income from activities	2	4
Personnel expenses	-189	-246
Other operating expenses	-26	-22
Depreciation of fixed assets	-3	-3
Grants, donations and legacies transferred to result	2	2
Impairment and results of disposals of non-curr. assets	0	0
Other results	0	-15
OPERATING RESULT	2	1
Financial income	0	0
Financial expenses	0	0
FINANCIAL RESULT	0	0
OPERATING PROFIT	2	1
Other results *	-568	0
PRE-TAX RESULTS	-566	1
TAXES	0	0
RESULT FOR THE FINANCIAL YEAR	-566	1

SANT TOMÀS FOUNDATION

BALANCE SHEET	2023 (thousand €)	2024 (thousand €)
Non-current assets	12.241	12.358
Current assets	4.872	5.886
TOTAL ASSETS	17.113	18.244
Net assets	12.322	12.986
Non-current liabilities	1.471	1.255
Current liabilities	3.321	4.004
NET ASSETS AND LIABILITIES	17.113	18.244

PROFIT AND LOSS ACCOUNT	2023 (thousand €)	2024 (thousand €)
Income from activities	14.361	16.898
Grants awarded and other expenses	-16	-18
Variation in stocks	-11	-15
Supplies	-2.004	-2.537
Other income from activities	223	245
Personnel expenses	-10.633	-12.317
Other operating expenses	-1.536	-1.753
Depreciation of fixed assets	-332	-402
Grants, donations and legacies transferred to result	207	229
Impairment and results of disposals of non-curr. assets	0	-1
Other results	-2	22
OPERATING RESULT	258	352
Financial income	0	1
Financial expenses	-44	-91
FINANCIAL RESULT	-44	-90
OPERATING PROFIT	214	262
Other results **	83	0
PRE-TAX RESULTS	296	262
TAXES	0	0
RESULT FOR THE FINANCIAL YEAR	296	262

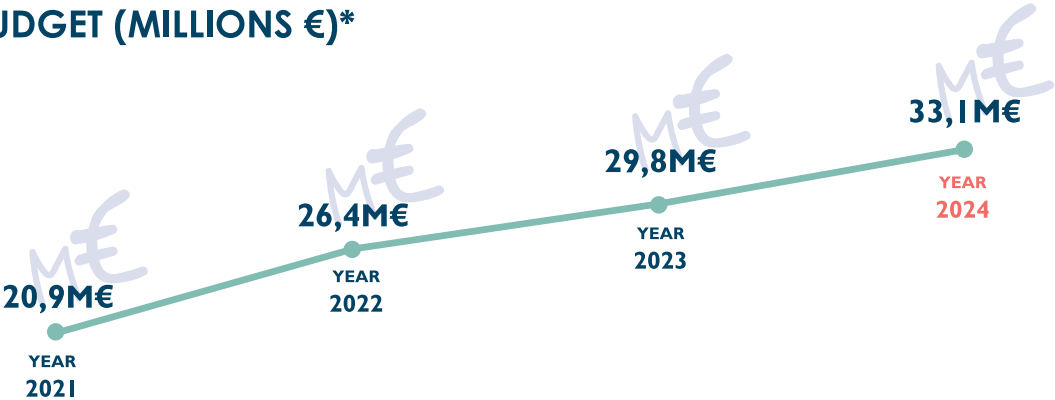
TAC OSONA FOUNDATION AND AFFILIATED COMPANIES

BALANCE SHEET	2023 (thousand €)	2024 (thousand €)
Non-current assets	5.283	5.501
Current assets	5.410	5.395
TOTAL ASSETS	10.693	10.896
Net assets	7.095	7.393
Non-current liabilities	1.056	772
Current liabilities	2.542	2.731
NET ASSETS AND LIABILITIES	10.693	10.896

PROFIT AND LOSS ACCOUNT	2023 (thousand €)	2024 (thousand €)
Income from activities	14.028	15.883
Grants awarded and other expenses	0	0
Variation in stocks	17	64
Supplies	-804	-1.560
Other income from activities	29	27
Personnel expenses	-11.231	-12.131
Other operating expenses	-1.545	-1.606
Depreciation of fixed assets	-452	-543
Grants, donations and legacies transferred to result	76	115
Impairment and results of disposals of non-curr. assets	13	2
Other results	-5	116
OPERATING RESULT	127	366
Financial income	16	15
Financial expenses	-47	-55
FINANCIAL RESULT	-31	-39
OPERATING PROFIT	95	327
Other results	0	0
PRE-TAX RESULTS	95	327
TAXES	-3	-9
RESULT FOR THE FINANCIAL YEAR	92	318

* Year 2023: donation of shares in Vic Verd to the Tac Osona Foundation and cancellation of debt transfer Riudeperes to the Sant Tomàs Foundation.
** Year 2023: Cancellation by the Sant Tomàs Association of the debt for the transfer of Riudeperes to the Sant Tomàs Foundation and provision for claims at the Estel School.

TOTAL BUDGET (MILLIONS €)*



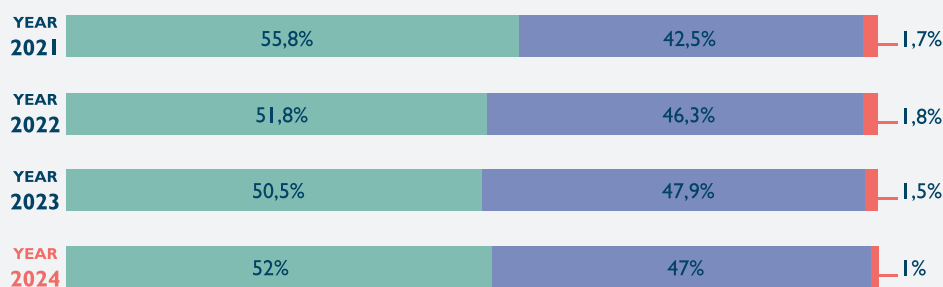
* Aggregated figures for the Sant Tomàs Association, Sant Tomàs Foundation, Tac Osona Foundation, Tac Osona Insertion Company, Vic Verd and Tac Osona Services.

INCOME*

Public administrations ●

Internal ●

Private ●



SOURCE OF INCOME

	ANY 2021	ANY 2022	ANY 2023	ANY 2024
PUBLIC ADMINISTRATIONS ●				
Government of Catalonia	53,99%	50,17%	49,20%	50,79%
Barcelona Provincial Council	0,10%	0,09%	0,05%	0,05%
Osona Regional Council	0,70%	0,56%	0,52%	0,49%
Osona municipal councils	0,84%	0,63%	0,53%	0,44%
Spanish Govt.	0,14%	0,38%	0,24%	0,18%
INTERNAL ●				
Users fees	2,68%	2,31%	2,13%	2,09%
Residential area copayment	1,17%	0,76%	0,98%	1,14%
Activity fees	0,51%	0,62%	0,79%	0,84%
Business services turnover	34,94%	41,27%	41,84%	41,29%
Miscellaneous income	3,24%	1,37%	2,22%	1,67%
PRIVATE ●				
Membership fees	0,40%	0,32%	0,27%	0,26%
Donations for companies and institutions	1,25%	1,44%	1,17%	0,71%
Donations from individuals	0,03%	0,07%	0,06%	0,04%

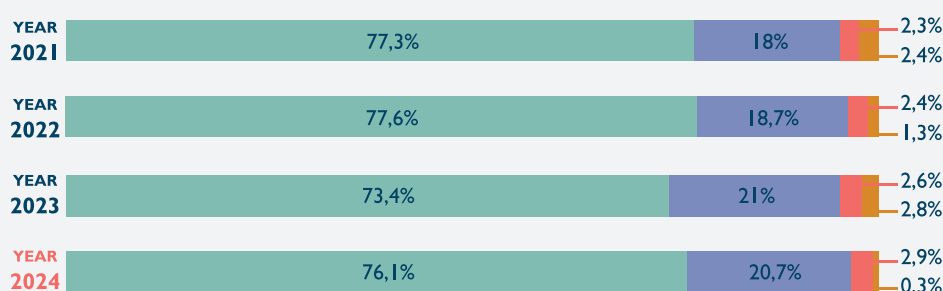
EXPENDITURE*

Salaries and Social sec. ●

Operating expenses ●

Depreciations ●

Other ●



SPONSORS



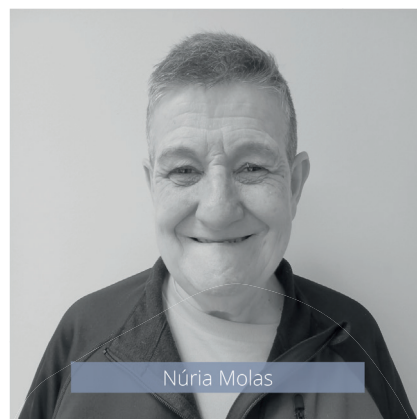
* Aggregated figures for the Sant Tomàs Association, Sant Tomàs Foundation, Tac Osona Foundation, Tac Osona Insertion Company, Tac Osona Services and Vic Verd.

#SOM SANT TOMÀS



Chus Cordero

"My name is Chus Cordero. I've been working at Tac Osona, the social enterprise of Sant Tomàs, for nearly 7 years. I lead the support area for people and their families. I truly enjoy my job and feel fortunate to do it, as I'm constantly learning through interaction with professionals across the organisation."



Núria Molas

"I'm Núria Molas and I've been connected to Sant Tomàs for 23 years. I worked many years in the kitchen and now I'm at the workshop making Sant Tomàs crisps. I live in a flat with three roommates and we get support from educators to live independently."

"I'm Dani Montilla and I live in a Sant Tomàs residence in Manlleu. Every day I go to the Occupational Centre, and my favourite activity is doing social crafts. I want to learn how to sew, although I find it hard. Physical activity makes me feel good — I play paddle tennis, football, and I do athletics with the Sant Tomàs leisure and sports Club."

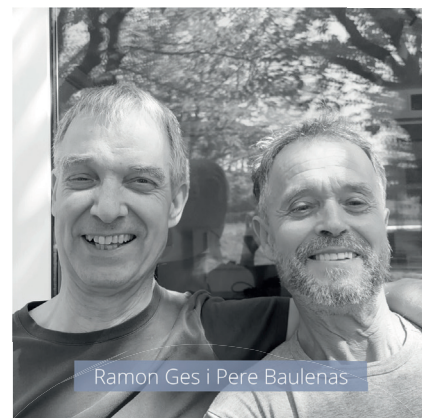


Dani Montilla



Sió Pardo

"I'm Sió Pardo and my sister Iolanda, who is 47, has been supported by Sant Tomàs for nearly 40 years. She started at Sant Tomàs school and has been connected to the organisation ever since. Sant Tomàs has helped us tremendously with decision-making, and we always feel supported."



Ramon Ges i Pere Baulenas

"We are Ramon Ges and Pere Baulenas, and we've shared a passion for traditional Catalan dance through the Esbart Castell de Tona. Now we bring this passion to the people at the Occupational Centre. We love the connection we've built and look forward to Mondays to share special moments of movement and bonding."

"My name is Marc Mèrida and I've attended Escola Estel since I was 3. I use pictograms to communicate. My teachers have helped me a lot in expressing myself and asking for what I need. I love shopping for garden hoses, going mushroom picking, and watching washing machines run."



Marc Mèrida



Gent molt capaç!

EVERY ACTION COUNTS. GET INVOLVED AND BE PART OF THE CHANGE!



Offer an employment
contract to a person with
a disability



Hire our services



Buy our products



Make a donation



Become a member



Become a volunteer

www.santtomàs.cat
info@santtomàs.cat
T. 93 885 44 82
C. Sot dels Pradals, 7 08500 Vic