

A woman with short dark hair and glasses, wearing a red zip-up hoodie and black pants, stands in a grassy field. She is holding a bright green leash. In the background, there is a fenced-in area with several alpacas and a wooden building. The scene is set in a rural, wooded area with tall pine trees under a clear blue sky.

s

t

santtomàs

**Supporting people,
empowering potential**

REPORT 2025

santtomas.cat

MESSAGE FROM THE PRESIDENT

Dear all,

The 2025 Annual Report covers a particularly significant year for Sant Tomàs. It has been a year of commitment, recognition and renewal, in which we have reaffirmed our role as a benchmark organisation in the territory and as an active voice in the defence of the rights of people with intellectual disabilities.

We took to the streets to demand improvements for the disability sector, joining a necessary campaign to guarantee fair funding and dignified conditions both for the people we support and for our workers. We did so with responsibility and determination, because we believe that our mission also involves influencing and defending a more inclusive and equitable social model.

This year we had the honour of receiving the Placa al Treball President Macià, a recognition that fills us with pride and is the result of the collective trajectory of many people who, over the years, have helped the Sant Tomàs project grow.

This year, the presidency of the organisation was also renewed, and I once again take on this responsibility with enthusiasm, grateful for the trust placed in me and fully aware of the challenges ahead. My commitment is absolute and I will dedicate all my efforts, and those of my fellow Board members, to meeting them.

We have continued to advance in improving our services, in the professionalisation of the organisation, and in the quality of person-centred care. For this very reason we have made significant financial efforts to ensure the best support through greater recruitment of professionals and support workers with our own resources.



This has been especially necessary this year due to the building works taking place at the Riudeperes centre, which has required us to employ more professionals to manage the duplication of spaces.

We know that the coming years will demand determination: guaranteeing financial sustainability, improving conditions in the sector, attracting and retaining talent, and adapting to a constantly evolving social and regulatory environment — but we know we are ready.

None of this would be possible without the commitment of our professional staff, who are the soul of the organisation, and the trust of the families who give meaning to everything we do. I also want to express my gratitude to the individuals, public administrations and companies that trust us through their donations, their collaboration or their altruistic dedication.

Thank you very much for supporting Sant Tomàs.

A handwritten signature in blue ink, appearing to read 'Joan Casany i Viñeta'.

Best regards,
Joan Casany i Viñeta, president



GOVERNING BOARD AND BOARD OF TRUSTEES

- Sant Tomàs Association
- Sant Tomàs Foundation
- Tac Osona Foundation

Mr. Joan Casany i Viñeta ●●●
President (CEDO - Osona Business Council)

Ms. M.Carme Bover i Franquesa ●●●
1st Vice-President (Riudeperes Centre)

Ms. Carme Guinovart i Garriga ●●●
2nd Vice-President (CET - Tac Osona)

Ms. Àngels Vila i Sala ●●●
Secretary (Vic Bar Association)

Mr. Marc Verdaguer i Montanyà ●●●
Treasurer (Calldetenes Town Council)

Mr. Enric Clarasó i Collbatallé ●●●
Member (CDIAP Tris Tras and CDI Espai Viu)

Mr. Xavier Hernández i Soto ●●●
Member (Estel Special Education School)

Mr. Joan Codinachs i Alonso ●●●
Member (Sant Tomàs Occupational Centre)

Mr. Ramon Casasas i Riba ●●●
Member (Clarella housing service)

Ms. Jordi Prat i Novellas ●●●
Member (Club CAR leisure and sports service)

Mr. Ignasi Julià i Lloret ●●●
Member (Eina training and employment centre)

Ms. David Bosch i Petit ●●●
Member (Manlleu Municipal Council)

Ms. Núria Montanyà i Tanyà ●●●
Member (Torelló Municipal Council)

Ms. Núria Homs i Molist ●●●
Member (Vic City Council)

Ms. Sara Vidal i Aguiló ●●●
Member (La Fageda)

Ms. Mercè Generó i Prat ●●●
Member (Osonament)

Mr. Antoni Molas i Casas ●●●
Member (Hospital Consortium of Vic)

Mr. Marc Mussons i Torras ●●●
Member (UVic - Central University of Catalonia)

Mr. Gerard Sancho i Vilalta ●●●
Member (Osona Regional Council)

Mr. Pere Girbau i Pous ●●●
Member (Civil Society)

Mr. Evarist Puigvila i Prat ●●●
Member (Calandra)

Mr. Josep Ramon Delgado i Berdala ●●●
Member (Calandra)

Ms. Maria Carme Barcons i Matavera ●●●
Member (Calandra)

MISSION



To improve the quality of life of people with intellectual disabilities or developmental disabilities and their families.

VISION



To be a person-centred organisation that works together with society and in partnership to provide quality support that promotes individual empowerment and sustainable development, through the tools and principles of the social and solidarity economy.

Territorial scope: Osona and Lluçanès.

VALUES



Sant Tomàs is characterised by always placing the person at the centre, as a way of valuing their dignity. Respect for human dignity is the foundation upon which the values that guide our actions and decisions are built.

- Commitment
- Equity
- Integrity
- Responsibility
- Sustainability
- Transparency and communication

SANT TOMÀS

SOCIAL AND EDUCATIONAL AREA

Sant Tomàs Association: It began its activity in 1967, driven by a group of 7 families with children with disabilities, together with members of civil society and representatives of Osona municipal councils. Its aim is to promote leisure and associative life. It promotes recreational, participatory and social activities, as well as cross-cutting initiatives to strengthen ties between families.

Sant Tomàs Foundation: Created in 2016 by the Associació Sant Tomàs, this initiative integrates the educational and care services for the people supported and their families. It offers lifelong support to people with intellectual disabilities or developmental disabilities.

ORGANIZATIONS WE ARE PART OF

*Associació Catalana de Treball amb Suport (ACTAS)
*Coordinadora de Centres per a persones amb discapacitat intel·lectual de Catalunya (CCPC)
*Federació Catalana d'Esports per a Persones amb Discapacitat Intel·lectual (ACELL) *Grup d'Investigació en Educació Especial (GIEE) *Programa Incorpora de "la Caixa" *Taula de la Infància, Adolescència i Famílies d'Osona *Unió Catalana de Centres d'Atenció Precoç (UCCAP) *XEISOR (Xarxa d'Entitats d'Inserció Sociolaboral d'Osona i al Ripollès) *Xarxa d'Escoles Sostenibles de Vic *Xarxa d'Habitatges d'Inserció Social de l'Agència de l'Habitatge de Catalunya *Xarxa de iniciatives d'Economia Social i Solidària de Manlleu.

ENTITIES WE PARTICIPATE IN

***L'ESGUARD CAREGIVING FOUNDATION:** Sant Tomàs is a founding entity and sits on the Board of Trustees.

***SINERGRUP (ASSOCIATION OF ORGANISATIONS WITH SOCIAL IMPACT):** Groups 8 non-profit organisations working in the care of vulnerable groups. The General Director of Sant Tomàs served as its president from 2014 to 2024.

***OSONAMENT:** Sant Tomàs is a founding entity and has been represented since its beginnings.

***DINCAT AND AEES DINCAT:** Sant Tomàs participates in the Board and in various working committees of Dincat. It also forms part of the board of the business organisation of social initiative entities.

***VITAMINA D:** Sant Tomàs is a founding member of this energy services and sustainable mobility cooperative.

***LA FAGEDA:** Sant Tomàs is a member of the Board of Trustees of this organisation that supports people with disabilities in La Garrotxa.

SOCIAL ENTERPRISE AREA

Tac Osona Foundation: Created in 2009, it generates stable employment opportunities to promote the professional and social inclusion of people with intellectual disabilities, developmental disabilities or in situations of vulnerability. It has the following subsidiaries and affiliated companies:

* TAC OSONA EMPRESA D'INSERCIÓ, SLU:

Established in 2020, owned by Fundació Tac Osona, launched with the support of Manlleu Town Council. It focuses on socio-labour insertion, mainly in the cleaning and space maintenance sector, for people who have difficulties finding work. 56 people at risk of social exclusion work there.

* **VIC VERD, SL:** Established in 2010 with Vic Town Council and Recollida i Reciclatge. Following Vic Town Council's withdrawal, Fundació Tac Osona holds 91.4% of the shares and Recollida i Reciclatge S.L. the remaining 8.6%. It currently manages the gardening services of the municipality of Vic and the collection of bulky waste. It employs 32 people, 22 of whom have disabilities.

* **TAC OSONA SERVEIS, SLU:** Established in 2021. Owned by Fundació Tac Osona, it represents an organisational improvement and an important complement to the activity of the Special Employment Centre. It provides services to the group's entities, such as educational support services at the Estel school, among others.

* **ECOGRUP ECOLÒGICA, SL:** Established in 2012, Fundació Tac Osona and Fundació Viver de Bell-lloc hold 67.09% of the capital split equally, and the remaining 32.91% belongs to private partners in the organic fruit and vegetable sector. Its activity is the online sale of these products and it employs 6 people with disabilities.

* **RECOLLIDA I RECICLATGE, SL:** Established in 1994, Fundació Tac Osona holds a 36% stake in the capital. It is a company dedicated to the collection of bulky waste and the recycling of plastic, cardboard and pallets. 24 people work there, 4 of whom have disabilities.

* **UTE MAP-TAC:** Started in 2016. 75% owned by Fundació MAP and 25% by Fundació Tac Osona. It provides gardening services in the municipality of Torelló.

COMMITMENT TO SUSTAINABILITY

The Fundació Sant Tomàs promotes a management model committed to environmental sustainability, integrating specific actions in mobility, energy and the improvement of facilities.



Electric mobility

Sant Tomàs is committed to decarbonising mobility through the progressive electrification of its fleet. Currently, 5 vehicles are hybrid and 10 are 100% electric, of which 4 are shared across different services of the organisation.

The organisation has 13 charging points distributed across Manlleu, Vic and Calldetenes, which in 2025 supplied a total of 38.18 MWh of energy. This energy has helped avoid the emission of 33.44 tonnes of CO₂, actively contributing to the reduction of environmental impact.



Solar photovoltaic self-consumption

Sant Tomàs continues to advance in the generation of its own renewable energy. During 2025, the organisation had an installed capacity of 838 kWp in photovoltaic self-consumption installations.

These installations, together with those of TacOsona and Vitamina D, generated a total of 466.09 MWh of renewable energy.

As part of the facilities programme, new self-consumption installations have been set up:

- Occupational Centre of Sant Hipòlit de Voltregà: 20 kW photovoltaic installation for individual self-consumption.
- Occupational Centre of Manlleu: 40 kW photovoltaic installation for individual self-consumption.
- Sant Tomàs Pavilion: 50 kW collective self-consumption installation.

Furthermore, all electricity consumed from the grid holds a 100% renewable origin certificate, guaranteeing that it comes from green energy sources.



Building improvements and refurbishment

Sant Tomàs promotes improvement and renovation works on its facilities based on energy efficiency and sustainability criteria.

Notably, interventions were carried out at the Occupational Centre and Residence of Sant Hipòlit de Voltregà and at the Occupational Centre of Manlleu, aimed at optimising energy consumption, improving the comfort of the people supported and reducing the environmental impact of the buildings. In both cases, the renovations incorporated heat pump climate control systems, eliminating dependence on non-renewable energy sources.

Also noteworthy is the work carried out at the Sant Tomàs pavilion, where the fibre cement roof was removed and replaced with a new sandwich-panel roof, improving thermal insulation and the building's overall conditions.

The new Tona home was also adapted for temporary use as a residence for some of the Riudeperes users while the extension works at the residence are underway, ensuring service continuity under adequate conditions.

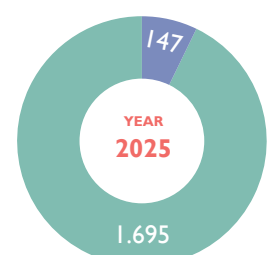
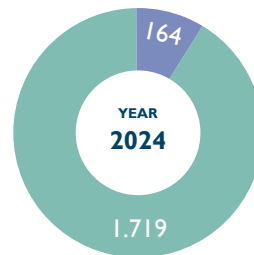
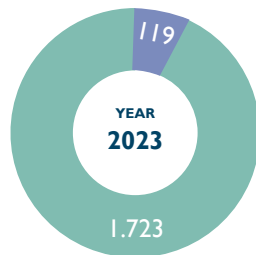
In parallel, the first phase of renovation of the new occupational centre and community training centre of Sant Tomàs in Vic was completed. This phase included waterproofing and improving the roof, as well as the restoration, sandblasting and fire protection of the building's structure. The final phase of the project is planned for 2026, leading to the centre's opening.

PROYECTOS ACTUALES Y DE FUTURO

- New home in Sant Hipòlit de Voltregà with the allocated funding.
- Opening of a home in Tona.
- New occupational centre in the centre of Manlleu.
- Maintaining public advocacy to achieve equal working conditions for professionals in the disability sector.
- Promoting the new participatory governance model for the organisation.
- Reception of the new renovated and extended Riudeperes centre building.
- Offering new resources to respond to the increase in cases of behavioural disorders and autism spectrum disorders.
- Promoting more sustainable mobility for the organisation.
- Monitoring the renovation works at the Sant Tomàs monastery.
- Creating a new space for the occupational centre and the Tris Tras in Centelles, and awaiting the municipal transfer of a new space for the occupational centre in Torelló.
- Creating an occupational centre and an art space in Roda de Ter.
- Renovating a building for multipurpose use as an occupational centre and community training centre in Vic.
- Promoting the Sant Tomàs Healthy Organisation Plan, focused on the physical and emotional wellbeing of workers, with continuity through 2026.

COMMUNITY

Members ● Volunteers ●



MEDIA IMPACT

173 MEDIA APPEARANCES



69

Press



17

TV



5

Radio



82

Digital Media

WEBSITE AND SOCIAL MEDIA

47.319 WEBSITE VISITS



4.749

Facebook followers



2.079

Followers X



4.882

Instagram followers



1.792

LinkedIn followers



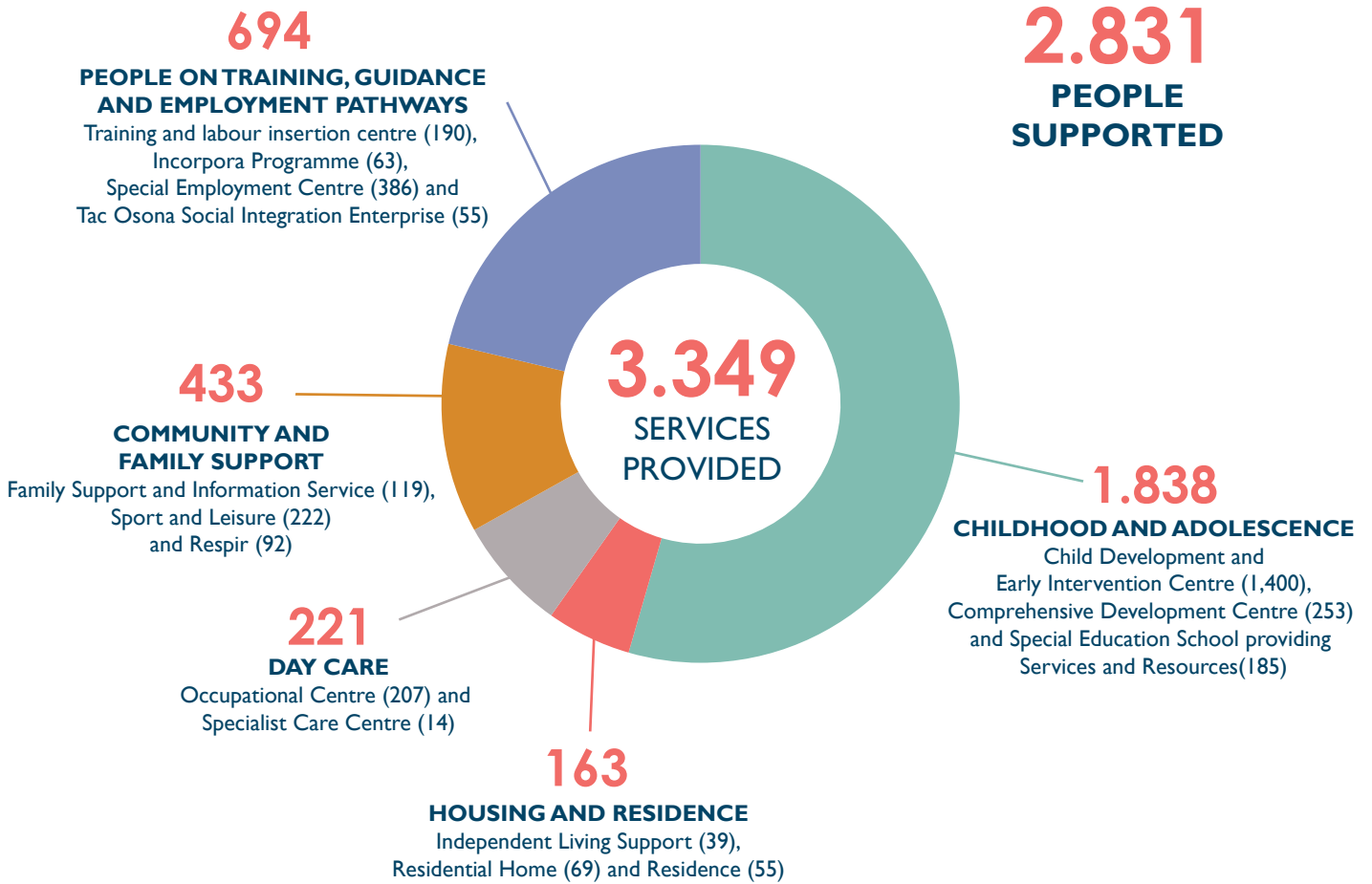
355

Subscribers YouTube

PERSONS ATTENDED



2.831
PEOPLE
SUPPORTED



HISTORICAL

Services provided ● Persons supported ●



SERVICES OF SANT TOMÀS

CHILDHOOD AND ADOLESCENCE

We offer support to children and young people with needs through therapies, stimulation activities and fostering individualised learning. We work in coordination with schools and community agents to guarantee comprehensive care.



1.838
SERVICES
PROVIDED

Tris Tras Early Development and Intervention Centre

Specialist centre for the early detection and intervention of children aged 0 to 6 with developmental disabilities, prioritising those aged 0 to 3 with severe conditions. It is part of the public social services network and offers free care with the involvement of the family and the surrounding environment.

 1.400

Espai Viu Comprehensive Development Centre

Private service attending to children and young people aged 6 to 18 with intervention needs in the motor, cognitive, educational, communicative or emotional areas.

 253

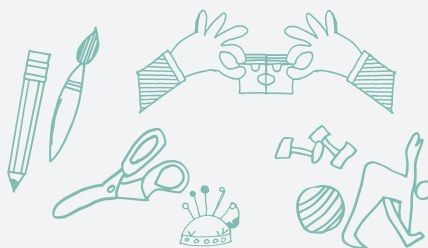
Estel Special Education School providing Services and Resources

State-subsidised special education school offering individualised support to children and young people aged 3 to 21, fostering their inclusion and learning. It also provides services and resources for inclusive education.

 185

DAY CARE

We offer support to adults with intellectual disabilities to enhance their wellbeing and autonomy. Through adapted services, personal development, social inclusion and active participation in the community are promoted.



221
SERVICES
PROVIDED

Occupational Centre

An alternative to labour insertion for adults with intellectual disabilities. Its purpose is to create a space that promotes integration, personal development and social awareness, motivating the person to be active and useful within the social fabric.

 207

Riudeperes Specialist Care Centre

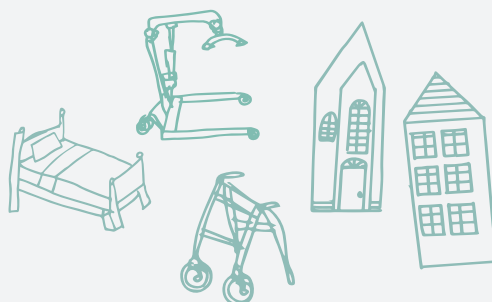
Offers day care to people with intellectual disabilities with extensive support needs, generalised conditions and additional health problems. As part of the care network, it provides specialist attention during the day. Autonomy and wellbeing are fostered with a person-centred approach.

 14

SERVICES OF SANT TOMÀS

HOUSING AND RESIDENCE

We provide safe and adapted spaces for people with intellectual disabilities, with a team of professionals offering personalised support. We work to promote their autonomy and social inclusion, with programmes that encourage community participation.



163
SERVICES PROVIDED

Independent Living Support

Service aimed at people with intellectual disabilities who, due to their level of autonomy, can live at home or live independently, with a more autonomous lifestyle. They receive targeted support in the areas where they need most assistance or supervision.



Clarella Residential Home

The residential homes offer permanent accommodation for people who use the organisation's day or employment services, fostering their autonomy and wellbeing. The rights, interests and preferences of each person are respected, promoting active participation.



Riudeperes Residence

Offers residential care to people with intellectual disabilities who need extensive support and may present additional health problems. It provides permanent or temporary care, acting as a substitute home and offering comprehensive support in daily activities. It operates 24 hours a day, every day of the year.



COMMUNITY AND FAMILY SUPPORT

We offer support to families and community services to promote the inclusion and wellbeing of people with disabilities. Through accompaniment, guidance and adapted activities, autonomy and social participation are encouraged.



433
SERVICES PROVIDED

Family and Requests Support Service

Service that addresses new requests from adults and their families. It coordinates actions and cross-cutting projects to promote family participation. It provides personalised support, organises support groups and working spaces. It also promotes networks and information sessions to guide and accompany families. 163 people have participated in support and participation networks and groups.



Club CAR Leisure and Sport Service

Offers leisure and sport activities in local and community settings for people with intellectual disabilities. Activities that improve physical and mental wellbeing and promote personal growth and social integration within the community.



Respir Service

Provides families of people with intellectual disabilities with the opportunity to rest from caring tasks. This service covers specific care needs outside the home, occasional support in daily care, or support within the home, among others.



SERVICES OF SANT TOMÀS

TRAINING, GUIDANCE AND EMPLOYMENT PATHWAYS

We support people with disabilities throughout their training and employment inclusion process. Through guidance, training and employment support programmes, competence development and inclusion in the labour market are facilitated, thereby promoting autonomy and quality of life.

Eina Training and Labour Insertion Centre

Offers courses and programmes to improve professional skills and meet employment needs. It is also a labour insertion service for people with intellectual disabilities and/or developmental disorders, designing adapted training pathways and providing ongoing support to both the individual and the employer, guaranteeing insertion and job stability.

136 have worked with support in mainstream employment and **175** have followed training and insertion pathways.

 **190**

Special Employment Centres

We have three Special Employment Centres (CET Tac Osona, CET Sant Tomàs and VicVerd) in which the majority of workers are people with intellectual disabilities, 75% of whom have severe difficulties, and they receive daily support from supervisors. They also receive psychological and social accompaniment to enhance their labour and community inclusion. The aim is to guarantee insertion and personal development opportunities. To this end, a wide range of services is offered to companies, institutions and individuals.

 **386**

Tac Osona Social Integration Enterprise

A social enterprise that provides employment opportunities to people in vulnerable situations, offering them experience and training to access the mainstream labour market. Workers receive technical support and socio-labour accompaniment to promote their professional and personal development. The aim is to foster inclusion through an individualised insertion pathway.

 **55**

694
SERVICES PROVIDED



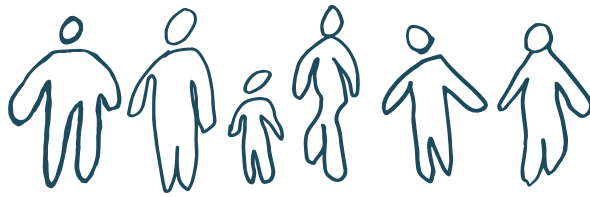
Incorpora Programme

63 people at risk of social exclusion have been supported through the Incorpora Programme of the "la Caixa" Foundation.

Our services are supported by:



OUR TEAM



1.110
WORKERS*



668
WORKERS WITHOUT DISABILITIES



387
WORKERS WITH DISABILITIES

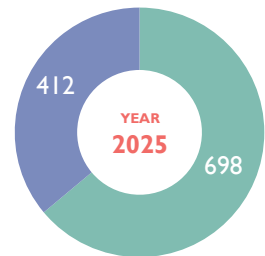
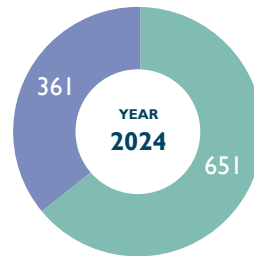
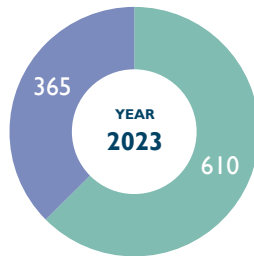
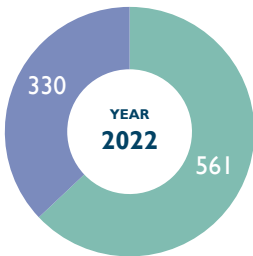


55
WORKERS AT RISK OF EXCLUSION

*Aggregated data from Associació Sant Tomàs, Fundació Sant Tomàs, Fundació Tac Osona, Tac Osona Insertion Company, Tac Osona Serveis and Vic Verd.

Women workers ●

Male workers ●



77,5%
WORKERS WITH PERMANENT CONTRACTS



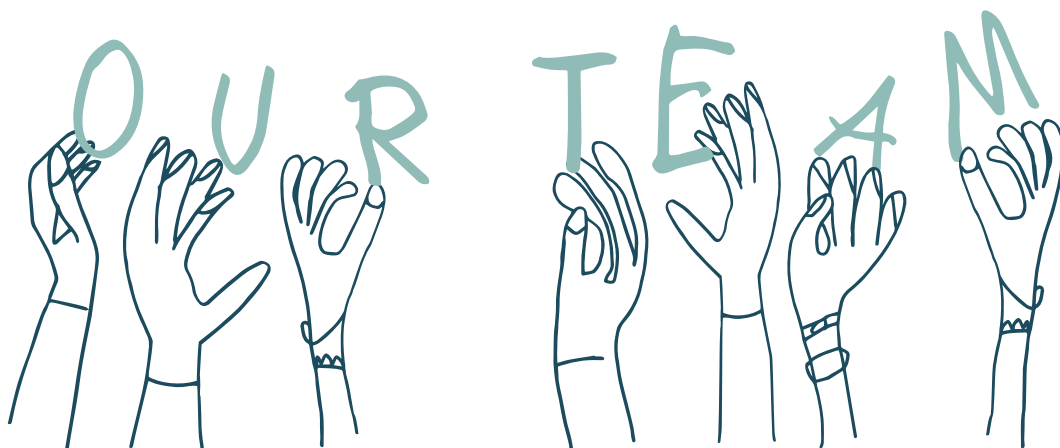
729
WORKERS TRAINED



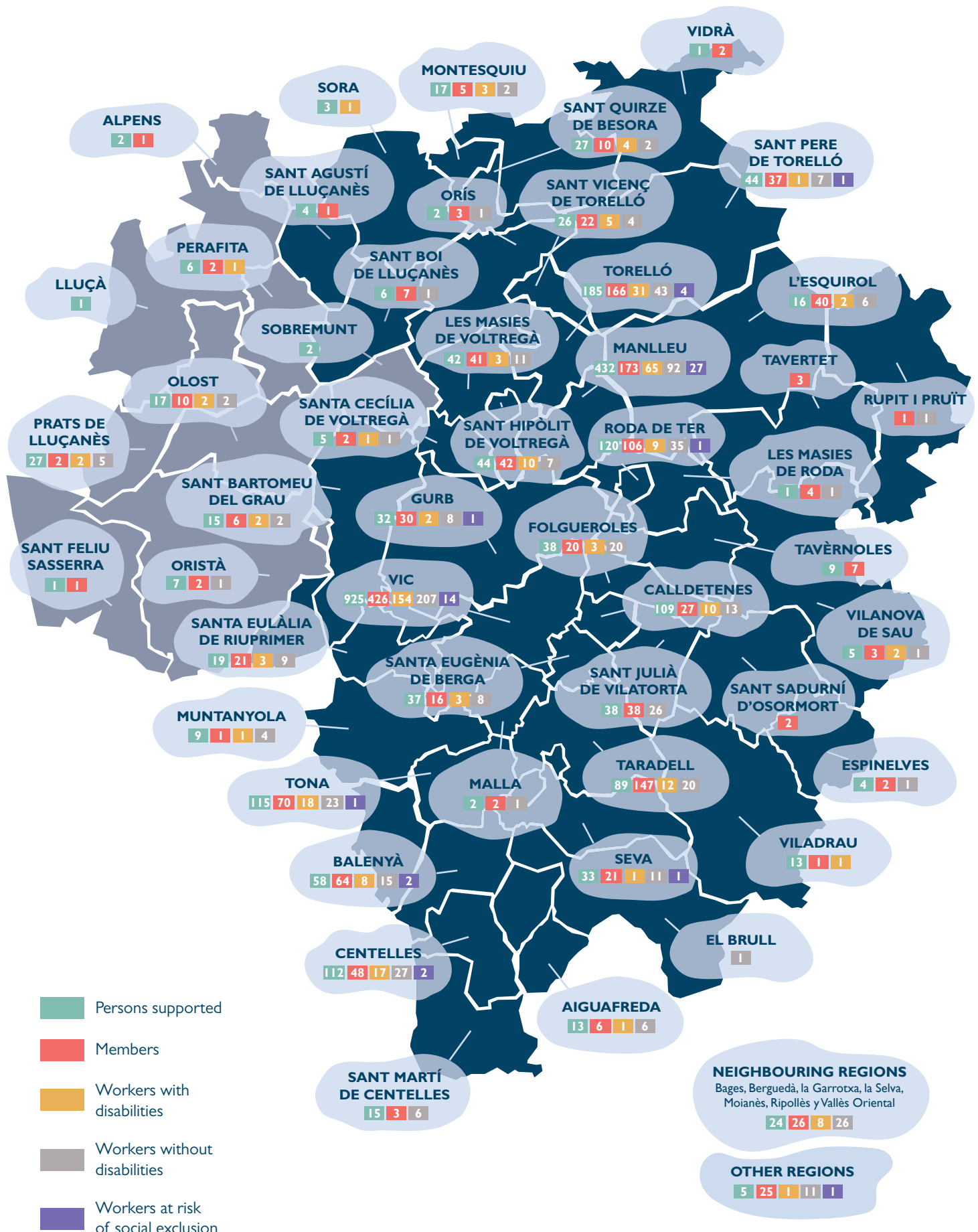
303
TRAINING SESSIONS



1.792,3
TRAINING HOURS



THE IMPACT OF SANT TOMÀS IN THE REGION



THE HIGHLIGHTS OF THE YEAR



Tris Tras launches the "Infants i rebequeries" campaign to support child-rearing



Estel school requests support from the Council of Mayors to address the waiting list



The Occupational Centre opens a new space in Torelló to support 15 people



Sant Tomàs celebrates 30 years of Clarella Homes



More than 300 people celebrate 50 years of Tac Osona



Renovation and extension works begin at the Riudeperes residence



Sant Tomàs takes to the streets to demand improvements for the disability sector



Sant Tomàs black pepper and savory crisps go on sale



Sant Tomàs receives the Placa al Treball President Macià award



Joan Casany is renewed as president of Sant Tomàs



The new occupational centre of Sant Hipòlit de Voltregà is launched



The new occupational centre of Manlleu takes shape ahead of its 2026 opening

FAMILY SATISFACTION SURVEYS

In 2025, the fourth edition of the survey for Sant Tomàs families was carried out to measure satisfaction with the organisation and the services provided.

It is an essential tool for continuing to work on improving the quality of life of the people supported and their families.

The survey is conducted every two years and this edition incorporated some changes. Firstly, a different channel was used to reach the families, and secondly, it was divided into two parts. The first covered questions about the functioning of the organisation and the second focused on the specific service or services the person receives.

Key findings:

- 93.11% of families are satisfied or very satisfied — 5 points higher than in 2023.
- There is a 5-point increase in families' appreciation of the fact that Sant Tomàs helps them feel calmer and trust in the future. 89.53% consider that it helps them greatly or gives them the strength to do so.
- 95% are satisfied with the information they receive from the organisation. A new communication channel with families was implemented during 2025.
- Families view Sant Tomàs participation groups positively, and interest in talks and workshops has grown.
- The survey sample has grown from 1,213 in 2023 to 1,519 people in this latest edition. Of these, 629 completed the survey. Participation has dropped slightly, from 48.8% in 2023 to 41.41% in 2025.

** Results can be consulted on the organisation's website.*



RESULTS

Very much ● Quite a lot ● A little ● Not at all ●

Rate your level of satisfaction with Sant Tomàs.



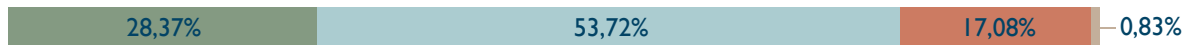
Do you receive all the necessary information from Sant Tomàs?



To what extent does Sant Tomàs help you feel calmer and trust in the future?



Rate the extent to which family participation is promoted at Sant Tomàs



What is your level of satisfaction with the service your family member uses?



Do you have a clear key worker to ask questions and request support regarding your family member?



Is your family member happier and enjoying a better quality of life thanks to the support provided by the service?



Are your suggestions listened to and taken into account?



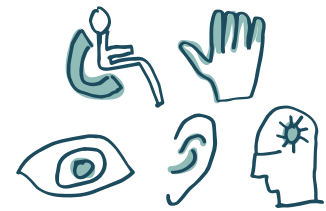
SANT TOMÀS COMMITTEES



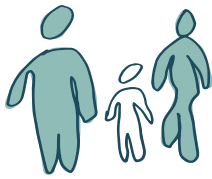
SELF-ADVOCATES



**SEXUAL AND
RELATIONSHIP WELLBEING**



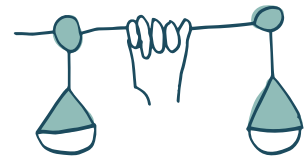
ACCESSIBILITY



FAMILY SUPPORT



SUSTAINABILITY



EQUALITY



**SPACE FOR ETHICAL REFLECTION
IN SOCIAL INTERVENTION SERVICES
(ERESS)**

QUALITY AND EXCELLENCE

Sant Tomàs's quality management system complies with quality standards (ISO 9001:2015), environmental (14001:2015), occupational health and safety (ISO 45001:2018) and food safety management (ISO 22000:2005). This year, certifications across all services have been renewed.

Other projects that have continued to be developed include:

- Strategic Plan.
- Balanced Scorecard.
- Corporate Responsibility Plan.
- Sant Tomàs Sustainability Plan.
- Computer-Aided Maintenance Management (CMMS).
- Whistleblowing channel management and GDPR compliance.

All these actions are linked to the organisation's 7 priority SDGs.



OUR ACTIVITIES



TRAINING AND SUPPORT FOR
WORKPLACE INTEGRATION



MUNICIPAL SERVICES



GARDENING



LAUNDRY



CATERING



CLEANING



INDUSTRIAL
SERVICES



BRIGADE MANAGEMENT
SOFTWARE



AUTÈNTIC - ART AND
DESIGN SERVICE



GIFT BOX
FOR COMPANIES



SANT TOMÀS
CRISPS



SANT TOMÀS
CHOCOLATE



THE WORKSHOP AND
SHOP OF SANT TOMÀS



THE CAFÉ
OF SANT TOMÀS

PARTNER COMPANIES AND INSTITUTIONS

949

COMPANIES AND
INSTITUTIONS
CLIENTS

COMPANIES THAT HIRED OUR SERVICES IN 2025

*Abacus Cooperativa *Aj. de Calldetenes *Aj. Centelles *Aj. de Vic *Aj. St. Bartomeu del Grau *Aj. St. Pere de Torelló *Albet *Ametller Origen *Array Plàstics *Bekaert Textiles *Benito Urban *Bon Preu *Carrefour *Cata Electrodomèstics *Cetrikó *Companyia d'Uniformes *Consultori Bayés *Covit *Creu Roja Osona *Deco Home and Garden *Divasa Farmavic *E3A Technologies *Elausa electrònics *Embotits Garriga *Embotits Espina *Embotits Monells *Embotits Salgot *Esteve Fred *Evofeed *Flosty Standard Republic *VIEFE *Font Verges *Formatges Mas el Garet *Frigorífics Ferrer *Fruites Germans Jimenez *Frusano *Fund. Escoles de Taradell *Fund. Hospital de la Santa Creu Vic *Gràfiques Manlleu *Granja Armengol *Grup Baucells Alimentació *Integracions Agrocatalunya *IVSiberica *La Doma *La Farga Grup *Lacats Adecor *Laurtin *Leroy Merlin *Les Josefines *Lidl *Liquats Vegetals *LP Foodies *Macson *Madel *Mafriges *Mec. De la fusta Kim *Metal Graphic *Mimcord *Montronic *Prezero *Proquímia *Pulit *Puntuajocs *Quopiam informàtica *Recollida i reciclatge *Relotgeria Prat *Sala de desfer-magatz. J. Viñas *Seidor *Servycat *SUMAR *Sheets Innovations *Supeco *Tesem S.A. *Universitat de Vic *Vedruna Escorial Vic *Vedruna Tona *Vicreú *Zelent Iberica

MAIN CLIENTS

INSTITUTIONS: *Agrupació de Sords de Vic i comarca *Aj. de Balenyà *Aj. de Calldetenes *Aj. de Centelles *Aj. de El Brull *Aj. d'Espinelves *Aj. de Folgueroles *Aj. de Gurb *Aj. de la Vall d'en Bas *Aj. de les Masies de Roda *Aj. de les Masies de Voltregà *Aj. de Lluçà *Aj. de Manlleu *Aj. d'Olost *Aj. de Roda de Ter *Aj. de Sant Hipòlit de Voltregà *Aj. de Sant Julià de Vilatorrada *Aj. de Sant Pere de Torelló *Aj. de Sant Quirze de Besora *Aj. de Sant Sadurn d'Osormort *Aj. de Santa Cecília de Voltregà *Aj. de Santa Eulàlia de Riuprimer *Aj. de Santa Eugènia de Berga *Aj. de Taradell *Aj. de Tona *Aj. de Torelló *Aj. de Vic *Aj. de Vilanova de Sau *Ass. La Cuca Fera de Folgueroles *Ass. Síndrome d'Asperger Osona *Ass. Sinergrup *CEO Maresme *Conferederación Plena Inclusion España *Consell Comarcal d'Osona *Consorti Alba-Ter *Consorti d'Osona de Serveis Socials *Consorti Hospitalari de Vic *Creació Ag. Emprenedoria Innovació *Dincat Federació *Diputació de Barcelona *Espai Natural Guillerries Savassona *Fageda Fundació *Federación Regnum Christi *Fund. Ampans *Fund. Bancària "La Caixa" *Fund. Centre Mèdic Psicopedagògic d'Osona *Fund. Girbau *Fund. Hospital de la Santa Creu *Fund. Impulsa *Fund. Institució Puig-Porret *Fund. Lluïsa Oller *Fund. Pere Mata *Fund. Pere Tarrés *Fund. Privada Aspros *Fund. Privada de gestió Clear *Fund. Tutelar l'Esguard *Fund. Universitària Balmes *Fund. Viver de Bell-lloc *Fundació llersis *Fund-Map *Generalitat de Catalunya *Hospitalitat Mare de Lourdes *Institut del Moianès *Mancomunitat la Plana *Organisme Autònom de Fires i Mercats de Vic *UTE MAPTAC

EDUCATION SECTOR: *AFA SES Gurb *Aula Emi *DLleure Gestió d'Extraescolars *Escola Guillem de Montrodon *Escola Doctor Joaquim Salarich *Escola Emili Teixidor *Fund. Educació i Art *Fund. Estudis Superiors en Ciències de la Salut *Fund. Privada escola Casals Gràcia *Fund. Universitària Balmes *Escola Salvador Dalí *Fund. Vedruna Catalunya Educació *Institut de Vic *Llar d'infants el Patufet *Lleure Aliberch *Serveis Territorials de Catalunya *UVic-UCC

COMPANIES: *Administració de Finques Julita Novellas *AERF *Agencia Nord *Aigües Vic *Alimentària Tarradellas Mas Galí *Animua *Aparcament del Passeig de Vic *Aplicacions i Muntatges Torelló *Arcadi Pla *Array Plàstics *Artifex Infraestructures *Ausa Comptable *Avícola i Ramadera Casellas *Avient Group *Axilone Metal *Basset Restaurant *Baulenas Aulet *Benito Urban *Berna Tèxtil *Blancafort 2000 *Boira Comercial Tècnica *Bon Preu *Boris 45 *Brightwell *Bugaderia Neutral *Business Tic Consultoria *Cal Peyu *Càmping Glòria *Can Piquipugui *Can Serrat Mataró *Caprabo *Carnovic *Carre Hülsta *Casa Ametller *Casa Tarradellas *Casals Reig *Casaperis Bcn *Cedinsa Conservació *Celler Cooperatiu d'Artés *Certis Obres i Serveis *Cetrikó *Chocolates Torras *Cigahotels España *Club Natació Vic Etb *Coca Del Mossèn *Com. Ene. Renewable Vitamina D *Comercial Ortrade Iberica *Consultori Bayés *Construccions Ferrer *Controller Alt *Cosins Vilamala Constructors *Costa Food Meat *Costertec *Curogar *D'Ausa Gestió d'Aparcaments *Depuradores d'Osona *Dinacil *Discongell *Divasa Farmavic *Diverinvest Asesoramiento *Ecogrup Ecològica *Eat's Easy Cuina *El Taller Estofat *Elis Manomatic *Enprat *Equip Assistència Primària Vic *Erma Plus Hotels *Esbelt *Escorxadador Frigorífic Osona *Esporç *Estructures Muntatges i Soldadures Js *Étalentum *Eukarya Xocolata *Euroregalos Eurolores *Exclusives Salat *Exit 2014 *Export El Bruguer *Fargas *Ferreteria Comella *Fèrules i Vàlvules *Finques Osona *Fleca Cal Tiana *Formatges Mas El Garet *Forn De Pa Xata *Forn Estrada *Forn Moya *Forn Ribas *Fundació Antoni Serra Santamans *Fundiciones de Roda *Geisntal *Gil Teulades *Girbau *Grapats and Nuts *Grup Gepork *Grup Ledexport *Grupo Alvic *Grupo Hoteles Playa *Hostal Bofill *Hostal La Glòria *Les Quatre Emes *Hosteleria de Serveis Col·lectius *Hotel Fira *Ilan Vínest Club *Ilunion Bugaderies de Catalunya *Industrias Tekor *Indyk Internacional de Comerç de Pr *Infocentre *IQAP *Isern Electro *Kamel Dermofarmacia *Kennet Osaruyi *Konecranes and Demag Ibérica *La Doma Sa de Curtidos *La Farga Lacambra *Laboratoris Neusc *Le Porc Gourmet *Lleure Aliberch *Liquats Vegetals *Llinasport *Lotes Conscientes *Mafriges *Mapex *Martí Albó Baranera *Materials de Construcció Gil *Merca Eleva *Mimasa Washtech *Mimcord *Montronic *Movilsa *Mss Seidor *Mutua Intercomarcal *Nando Jubany *Nirvauto Vallés *Nordlogway *Nuri i Espadalar *Obres i Paviments Llobet *Olecrum 22 *Olotvins *Omnia Equo *Onaigua Epel *Onnera Laundry Barcelona *Osona Elevació *Panaderia Alqueza *Paradores De Turismo De España *Parés Canudas *Pasquina *Patisserie Turro *Patel *Pedro Roquet *Pibasa Serveis *Pideca *Planificadora Vic *Plasfur *Plural Technics Eprojecta *Prasio *Prats Pa *Produc. Tecnic Manut. Osona *Proquímia *Promocions Veterinària *Pujolasos *Pxi Automotive *Quadpack Impressions *Que's Lider *Recollida i Reciclatge *Remedios Edibles *Riera Pinto *Rodi *Rodin *Roquet Hydraulics *Rovira Motor *Russiñol Clotet *Sanirent *Seidor Solutions *Serveis d'Intervenció Especialitzada *Serveis Hotelers Vila Dot *Servycat *Seven Languages *Signia Consultors *Silgan Dispensing Systems Covit Europe *Socid. General Aguas de Barcelona *Softvic *Some *Splendid Foods *Successors D'Orench *Suara Serveis *Synlab Diagnosticos Globales *Tal Com Pinta *Teb Verd *Tell Me Vic *Terpa *Tesem *Tole Catalana *Tres Knitting Fabrics *Triposona *Turrís Panem *Turrónes La Colmena *Tushita *Union Promotora de Inversiones *Urbaser *Ute Eix Transversal *Ute Fundació Albir Intermedia i Co *Vascat *Vidal Pons *Vidal Tulsa Eduard *Vilar Riba *Xarxa Comercial de Vic *Xarxa de Serveis Urbans *Xemivica Distribució *25 Osona Bus

FINANCIAL DETAILS

SANT TOMÀS ASSOCIATION

BALANCE SHEET	2024 (thousands €)	2025 (thousands €)
Non-current assets	68	143
Current assets	140	70
TOTAL ASSETS	208	213
Net equity	117	188
Non-current liabilities	0	0
Current liabilities	90	25
TOTAL NET EQUITY AND LIABILITIES	208	213

PROFIT AND LOSS ACCOUNT	2024 (thousands €)	2025 (thousands €)
Income from activities	281	156
Grants awarded and other expenses	0	0
Variation in stocks	0	0
Work carried out for the organisation for its own benefit	0	0
Procurement	0	-7
Other income from activities	4	6
Personnel expenses	-246	-127
Other operating expenses	-22	-25
Depreciation of fixed assets	-3	-3
Grants, donations and legacies transferred to result	2	1
Impairment and results of disposals of non-curr. assets	0	-1
Other results	-15	0
OPERATING RESULT	1	0,3
Financial income	0	0
Financial expenses	0	0
FINANCIAL RESULT	0	0
PRE-TAX RESULTS	1	0,3
TAXES	0	0
RESULT FOR THE FINANCIAL YEAR	1	0,3

SANT TOMÀS FOUNDATION

BALANCE SHEET	2024 (thousands €)	2025 (thousands €)
Non-current assets	12.358	13.811
Current assets	5.886	5.408
TOTAL ASSETS	18.244	19.219
Net equity	12.986	13.180
Non-current liabilities	1.255	1.738
Current liabilities	4.004	4.301
TOTAL NET EQUITY AND LIABILITIES	18.244	19.219

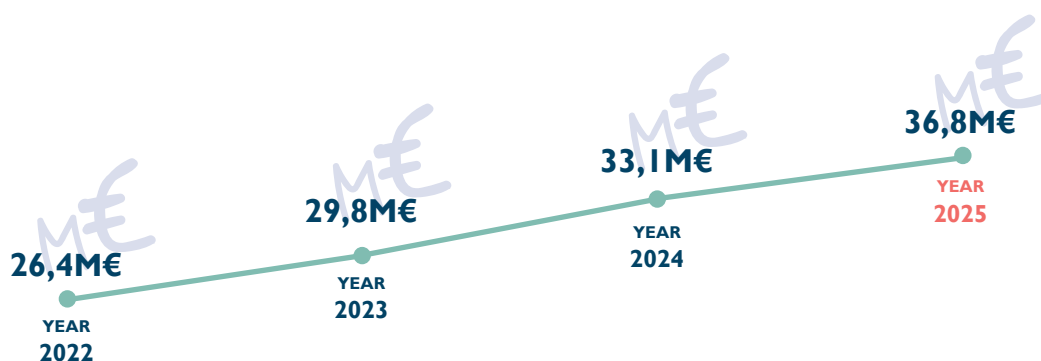
PROFIT AND LOSS ACCOUNT	2024 (thousands €)	2025 (thousands €)
Income from activities	16.898	19.458
Grants awarded and other expenses	-18	-13
Variation in stocks	-15	-1
Work carried out for the organisation for its own benefit	0	0
Procurement	-2.537	-3.088
Other income from activities	245	224
Personnel expenses	-12.317	-14.167
Other operating expenses	-1.753	-1.953
Depreciation of fixed assets	-402	-445
Grants, donations and legacies transferred to result	229	229
Impairment and results of disposals of non-curr. assets	-1	0
Other results	22	-25
OPERATING RESULT	352	218
Financial income	1	0
Financial expenses	-91	-110
FINANCIAL RESULT	-90	-110
PRE-TAX RESULTS	262	109
TAXES	0	0
RESULT FOR THE FINANCIAL YEAR	262	109

TAC OSONA FOUNDATION AND SUBSIDIARY COMPANIES

BALANCE SHEET	2024 (thousands €)	2025 (thousands €)
Non-current assets	5.501	5.914
Current assets	5.395	9.143
TOTAL ASSETS	10.896	15.057
Net equity	7.393	8.309
Non-current liabilities	772	3.521
Current liabilities	2.731	3.228
TOTAL NET EQUITY AND LIABILITIES	10.896	15.057

PROFIT AND LOSS ACCOUNT	2024 (thousands €)	2025 (thousands €)
Income from activities	15.883	18.233
Grants awarded and other expenses	0	0
Variation in stocks	64	78
Work carried out for the organisation for its own benefit	0	6
Procurement	-1.560	-2.461
Other income from activities	27	25
Personnel expenses	-12.131	-13.182
Other operating expenses	-1.606	-1.697
Depreciation of fixed assets	-543	-563
Grants, donations and legacies transferred to result	115	151
Impairment and results of disposals of non-curr. assets	2	0
Other results	116	-20
OPERATING RESULT	366	570
Financial income	15	33
Financial expenses	-55	-68
FINANCIAL RESULT	-39	-36
PRE-TAX RESULTS	327	534
TAXES	-9	-10
RESULT FOR THE FINANCIAL YEAR	318	524

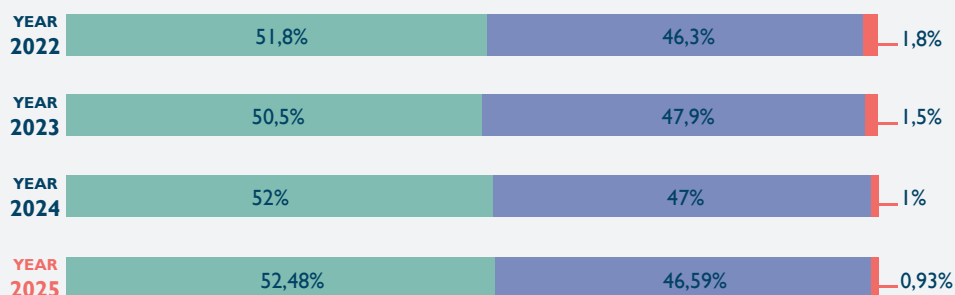
MANAGED BUDGET (MILLION €)*



*Aggregated data from the Sant Tomàs Association, the Sant Tomàs Foundation, the Tac Osona Foundation, the Tac Osona Integration Enterprise, Tac Osona Services

INCOME*

Public administrations ● Internal ● Private ●

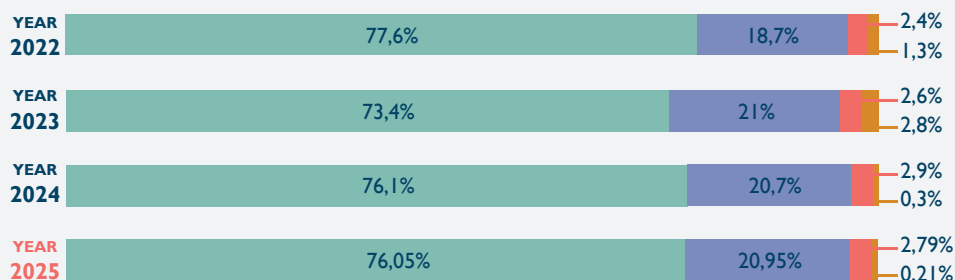


SOURCE OF INCOME

	YEAR 2022	YEAR 2023	YEAR 2024	YEAR 2025
PUBLIC ADMINISTRATIONS ●				
Government of Catalonia	50,17%	49,20%	50,79%	51,48%
Barcelona Provincial Council	0,09%	0,05%	0,05%	0,05%
Osona Regional Council	0,56%	0,52%	0,49%	0,43%
Osona municipal councils	0,63%	0,53%	0,44%	0,35%
Spanish Govt.	0,38%	0,24%	0,18%	0,18%
INTERNAL ●				
Users fees	2,31%	2,13%	2,09%	2,04%
Residential area copayment	0,76%	0,98%	1,14%	1,02%
Activity fees	0,62%	0,79%	0,84%	0,57%
Business services turnover	41,27%	41,84%	41,29%	41,96%
Miscellaneous income	1,37%	2,22%	1,67%	1,00%
PRIVATE ●				
Membership fees	0,32%	0,27%	0,26%	0,22%
Donations for companies and institutions	1,44%	1,17%	0,71%	0,67%
Donations from individuals	0,07%	0,06%	0,04%	0,03%

EXPENSES*

Salaries and Social sec. ● Operating expenses ● Depreciations ● Other ●



SPONSORS



*Aggregated data from the Sant Tomàs Association, the Sant Tomàs Foundation, the Tac Osona Foundation, the Tac Osona Integration Enterprise, Tac Osona Services

SOMSANTOMÀS



Pia Arumí

“My name is Pia Arumí, I’m 19 years old and I live in Gurb. I’ve been attending Estel special needs school for the past two years. I’m learning lots of things that will be useful in my adult life. For example, I order supplies for the whole school and swap dirty cloths for clean ones in the classrooms. What I like best is helping the younger pupils at the school; whenever I see them in the corridor, I always say hello. My friend is Salma and I’m very fond of all my classmates.”



Noa Cañizares

“My name is Noa Cañizares Fortes, I’m 24 years old and I live in a farmhouse in Orís. Thanks to Sant Tomàs, I’m currently on a dual training programme for people with disabilities, which is enabling me to learn a trade and find a job that fulfils me. For me, the goal in life is to work in a job that allows me to do my bit to make the world a better place, and I believe that with this training I can achieve that.”

“My name is Miquel Checa, and I’m Anna Checa’s brother. She’s been living at the Riudeperes care home for a year and a half now. Sant Tomàs has supported us and provided us with very attentive and warm care right from the start. Communication is excellent and I know exactly which activities she takes part in, what she enjoys most... My sister is doing well and is happy there, and so are we. If I had to give it a mark, I’d give it a 10!”



Miquel Checa



Albert Corominas

“My name is Albert Corominas and I’ve just turned fifty. I live at the Nadal care home in Vic. Sometimes I also go to my brother’s house in Calldetenes. I’ve been in Sant Tomàs since I was a child. First I went to Estel School. Then I went to the Manlleu Occupational Centre. I’ve been going to the Santa Anna community centre in Vic for six years. I go by bus or on foot. We look after the community centre with the group of friends.”



Ingrid Laso

“My name is Anna Casas, I’m 24 years old and I live in Aiguafreda. I used to go to the Calldetenes Occupational Centre, but since September 2024 I’ve been coming to the Centelles centre. We’ve just moved to new premises and I’m really happy here. The activities I like best are making up games and painting them, writing, going to the nursery, playing with the children and singing songs to them.”



Anna Casas

“My name is Ingrid Laso Cózar. I’m from Roda de Ter, although I left there 14 years ago and now live in Manresa. I have been working at Sant Tomàs for two and a half years, specifically in the Eina training and employment placement service. My job involves placing and supporting people with intellectual disabilities and/or developmental disorders in companies within the wider Osona area, using the supported employment approach.”



EVERY ACTION COUNTS. GET INVOLVED AND BE PART OF THE CHANGE!



Offer an employment contract
to a person with a disability



Hire our services



Shop our products



Make a donation



Join



Sign up to volunteer

www.santtomàs.cat
info@santtomàs.cat
T. 93 885 44 82
C. Sot dels Pradals, 7, 08500 Vic